



210 S. Lucile St. Seattle, WA 98108

# COMMISSARY KITCHEN SPACE

## 14,775 SF For Sale or Lease

Available July 2024



**Les Boudwin, SIOR**  
Managing Director  
les.boudwin@jll.com  
+1 (206) 679 6393

**Scott Carter**  
Managing Director  
scott.carter@jll.com  
+1 (425) 761 5880

**Connor Raffety**  
Senior Associate  
connor.raffety@jll.com  
+1 (206) 437 1006

## Building Details

**Location** Georgetown

**Building SF** 14,775 RSF

**Available** July, 2024

**Loading** 2 Grade-level doors

**Parking** 13 auto stalls

**Zoning** IG-2 U/85

**Power** 600-amps

**HVAC** 28-tons HVAC

**Restrooms** 4 total



## Site Details

**8,577 SF**

first floor office, showroom,  
food production

**6,198 SF**

second floor office

**Abundant**

water supply & pressure

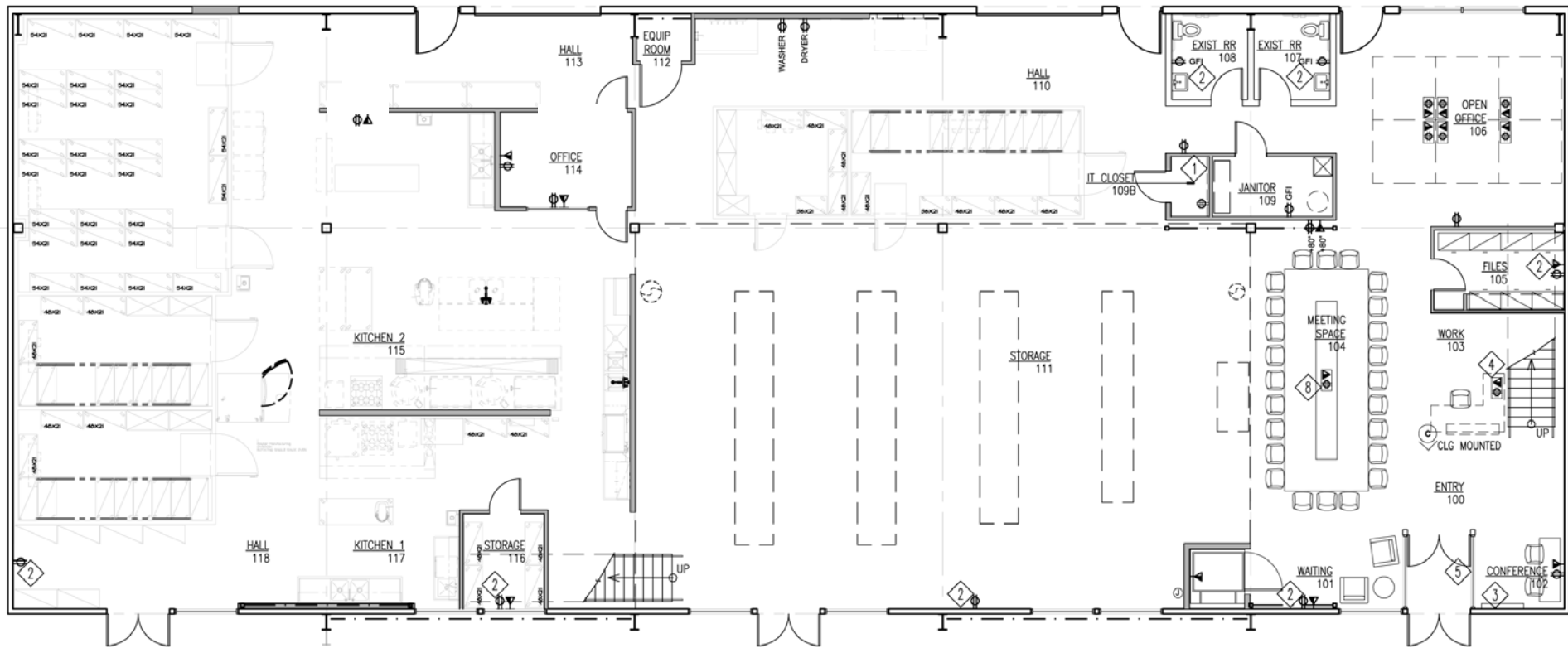
**3 Tax Lots**

building spans across all

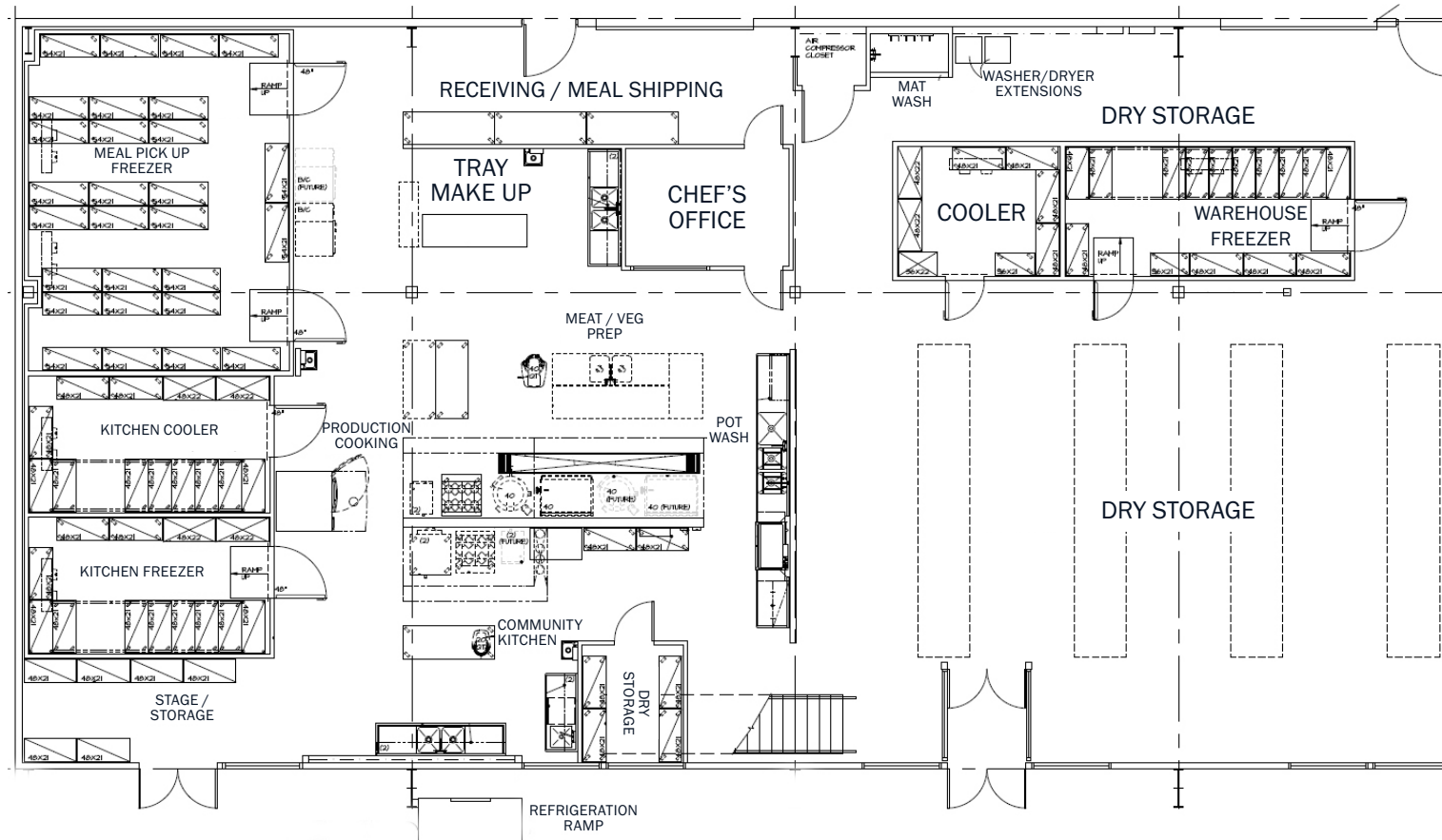
**Sale or Lease**

opportunity

# 1st Floor Food Production & Warehousing - 8,576 SF



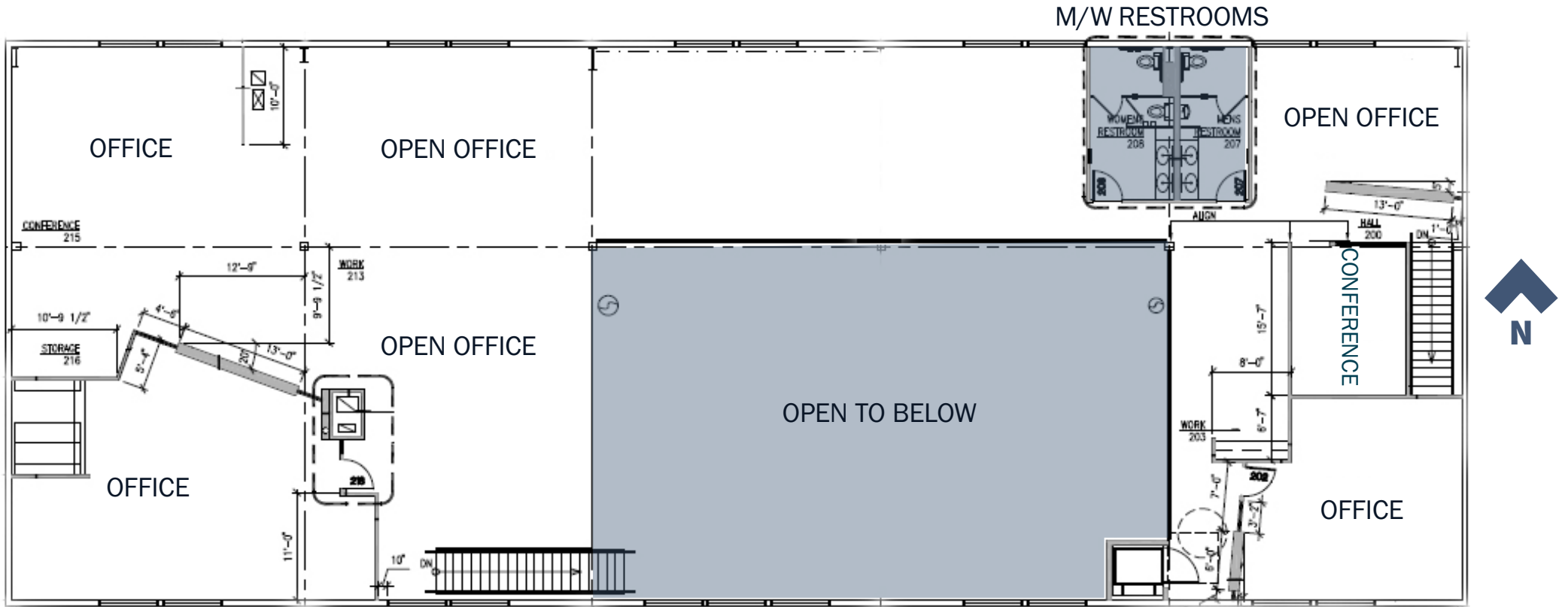
# 1st Floor Equipment Layout



## Equipment List

- » Dish table with Sink
- » Exhaust Hood with Make-up Air
- » Faucet and Hose Bib
- » Fire Suppression System
- » Floor Trough and Gate
- » Hand Sinks
- » Mat Rack
- » Prep Sink
- » Prep Table with Sinks
- » Refrigeration Rack
- » Rotating Single Rack Oven
- » Stainless Steel Wall Flashing
- » 2 Walk-in Coolers
- » 3 Walk-in Freezers
- » Vent Duct (Load)
- » Vent Duct (Unload)

# 2nd Floor Office & Mezzanine - 6,198 SF



# Recipe for Success



# Location

**3.9 miles**  
to Downtown Seattle

**8.5 miles**  
to SeaTac Airport

**5.0 miles**  
to Port of Seattle

**12.5 miles**  
to Downtown Bellevue





**Les Boudwin, SIOR**  
Managing Director  
les.boudwin@jll.com  
+1 (206) 679 6393

**Scott Carter**  
Managing Director  
scott.carter@jll.com  
+1 (425) 761 5880

**Connor Raffety**  
Senior Associate  
connor.raffety@jll.com  
+1 (206) 437 1006

Although information has been obtained from sources deemed reliable, neither Owner nor JLL makes any guarantees, warranties or representations, express or implied, as to the completeness or accuracy as to the information contained herein. Any projections, opinions, assumptions or estimates used are for example only. There may be differences between projected and actual results, and those differences may be material. The Property may be withdrawn without notice. Neither Owner nor JLL accepts any liability for any loss or damage suffered by any party resulting from reliance on this information. If the recipient of this information has signed a confidentiality agreement regarding this matter, this information is subject to the terms of that agreement. ©2023. Jones Lang LaSalle IP, Inc. All rights reserved.