

PORT OF TACOMA



For Sale

5001 20th Street East - Fife, WA

±43,950 SF Parcel delivery building on 3.66 AC

Property features



Close proximity to Port of Tacoma and I-5



Built in 1975, renovated in 1986



Ample power



Stand-alone industrial building



Clear span building



Regional commercial zoning with broad range of uses



Site Details

±43,950 SF
building size

3.66 AC
site area

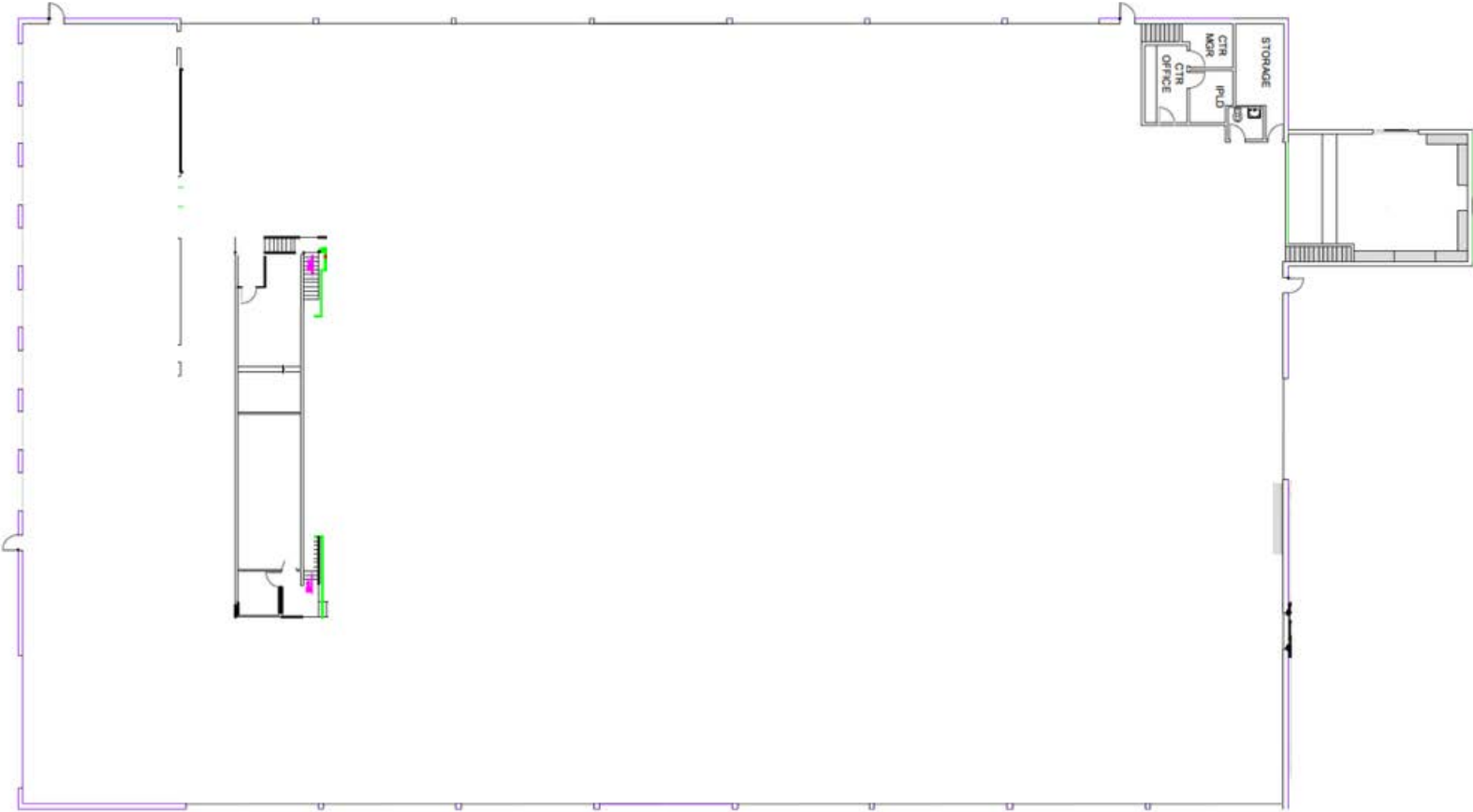
17 Drive-in
doors

8 Potential
loading dock positions

Abundant
parking



Site plan



Base shell specifications

Year constructed

1975, renovated in 1986

Site area

3.66 Acres

Building area

±43,950 SF

HVAC

Mix of unit heaters for warehouse and packaged rooftop units for office

Gas

Natural gas services

Sprinkler

Wet sprinkler system

Paving

Asphalt

Parking

150+ parking stalls



Regional commercial zoning

- Parcel delivery
- Multi-family
- Mixed use commercial
- Professional office
- Auto, boat, truck, RV sales
- Commercial services
- Entertainment facility
- Hotel
- Shopping center
- Restaurant
- R&D facilities
- Mini storage
- Electrical vehicle infrastructure
- Medical clinics

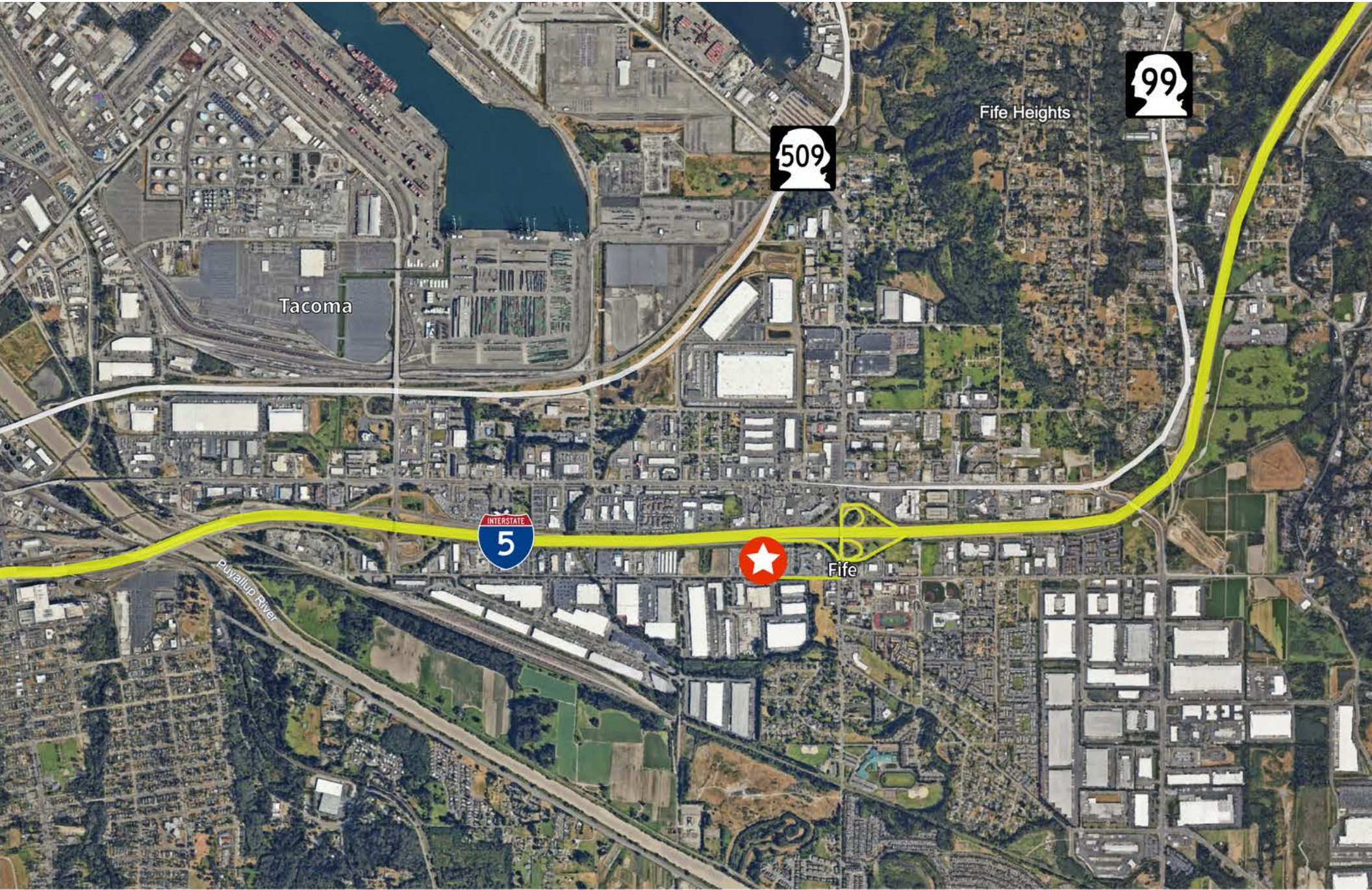
Location

Minutes
from Port of Tacoma & I-5

5.8 miles
to Tacoma CBD

29 miles
to Seattle CBD

37 miles
to Port of Olympia



Chris Spofford

chris.spofford@jll.com

+1 425 890 6961

David Cahill

david.cahill@jll.com

+1 206 930 5599