

FOR SALE

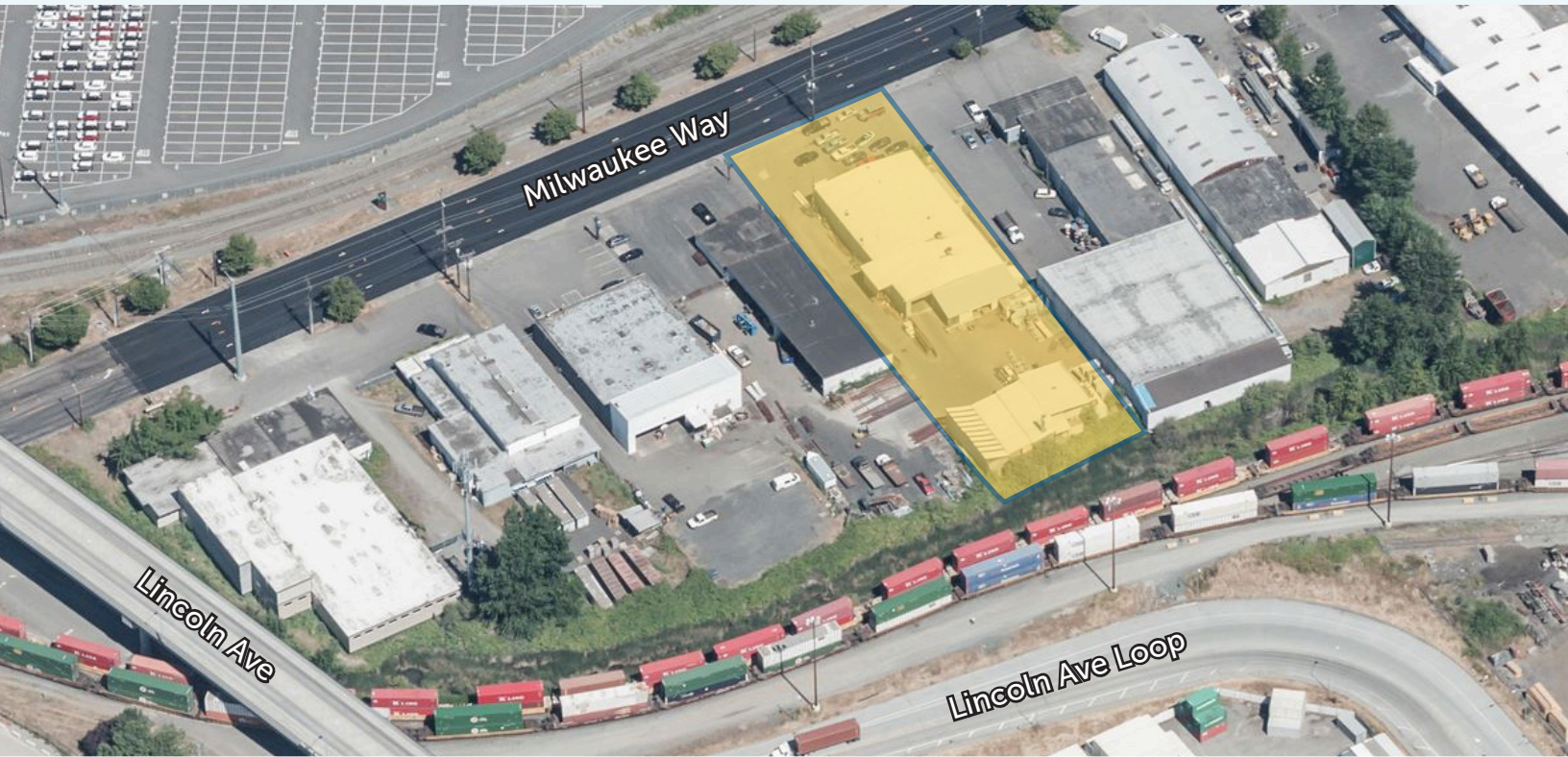
# 1944 MILWAUKEE WAY

TACOMA, WA



NEIL WALTER  
COMPANY

## HEAVY INDUSTRIAL PORT OF TACOMA SITE



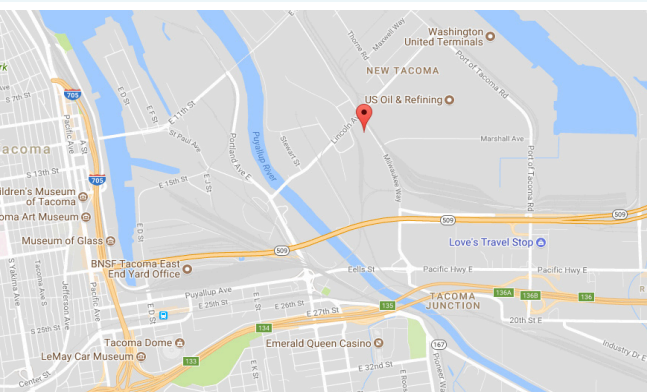
### SALE INFO

<b>Buildings:</b>	± 9,450 SF Main Bldg ± 1,200 SF Shed 500 SF Office
<b>Lot Size:</b>	40,946 SF
<b>Loading:</b>	1 DH & 1 GL
<b>Clear Height:</b>	12' - 16'
<b>Power:</b>	Heavy
<b>Sale Price:</b>	\$2,700,000

### PROPERTY FEATURES

Rare opportunity for fee simple ownership  
in the heart of the Port of Tacoma

Clearspan building	PMI Zoning allows for many industrial uses	Fully fenced property
Convenient Port of Tacoma location	Standalone paint booth	Buyer to conduct due diligence



For more details, contact:

**THERON MEIER**

253 779 2426

tmeier@neilwalter.com

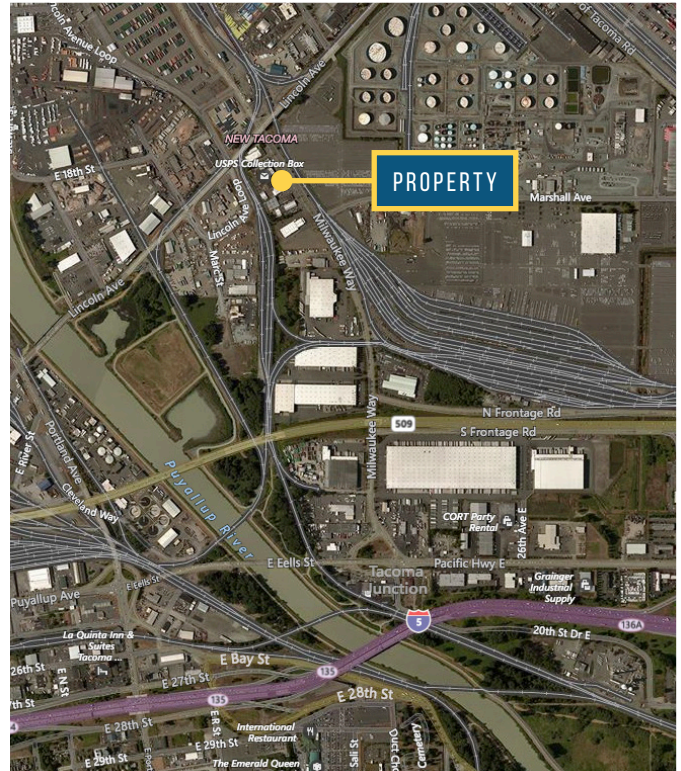
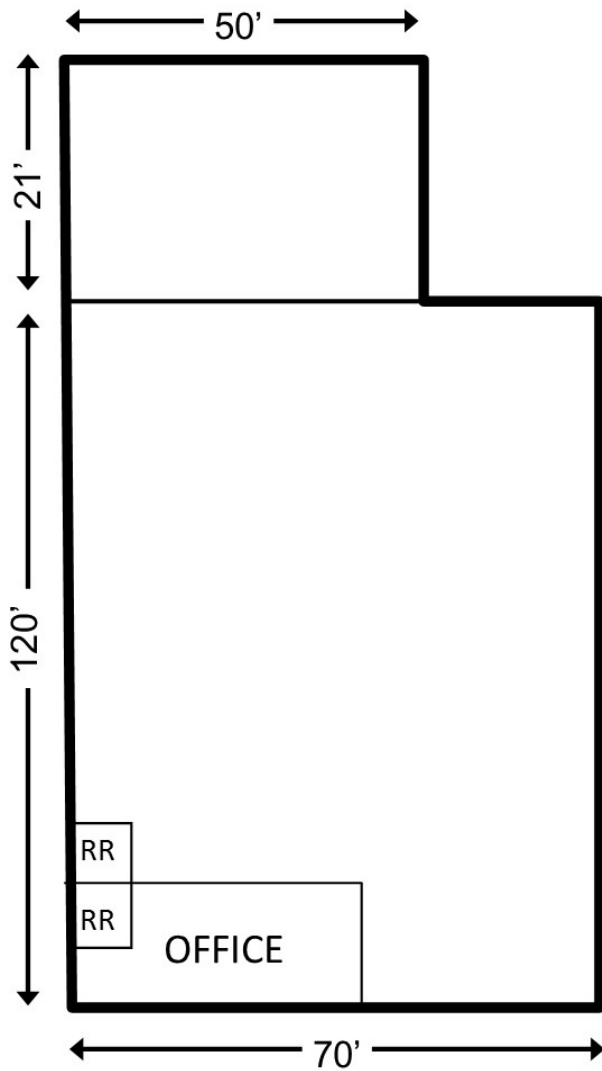
All information references in this document are approximate. The information contained herein is contained from sources deemed reliable. It is provided without representation, warranty, or guarantee, expressed or implied as to accuracy. Prospective buyer or tenant should conduct its own independent investigation relating to the property, government codes and regulations, allowed uses, and all other matters, regardless of whether they are referred to or contained in this document.

# 1944 MILWAUKEE WAY



TACOMA, WA

NEIL WALTER  
COMPANY



## Approximate Drive Times

Interstate 5	4 Min
Port of Tacoma	2 Min
Port of Seattle	40 Min
SeaTac Airport	25 Min

**THON MEIER**  
253.779.2426  
tmeier@neilwalter.com

253.779.8400  
www.neilwalter.com

1940 East D St, Suite 100  
Tacoma, WA 98421