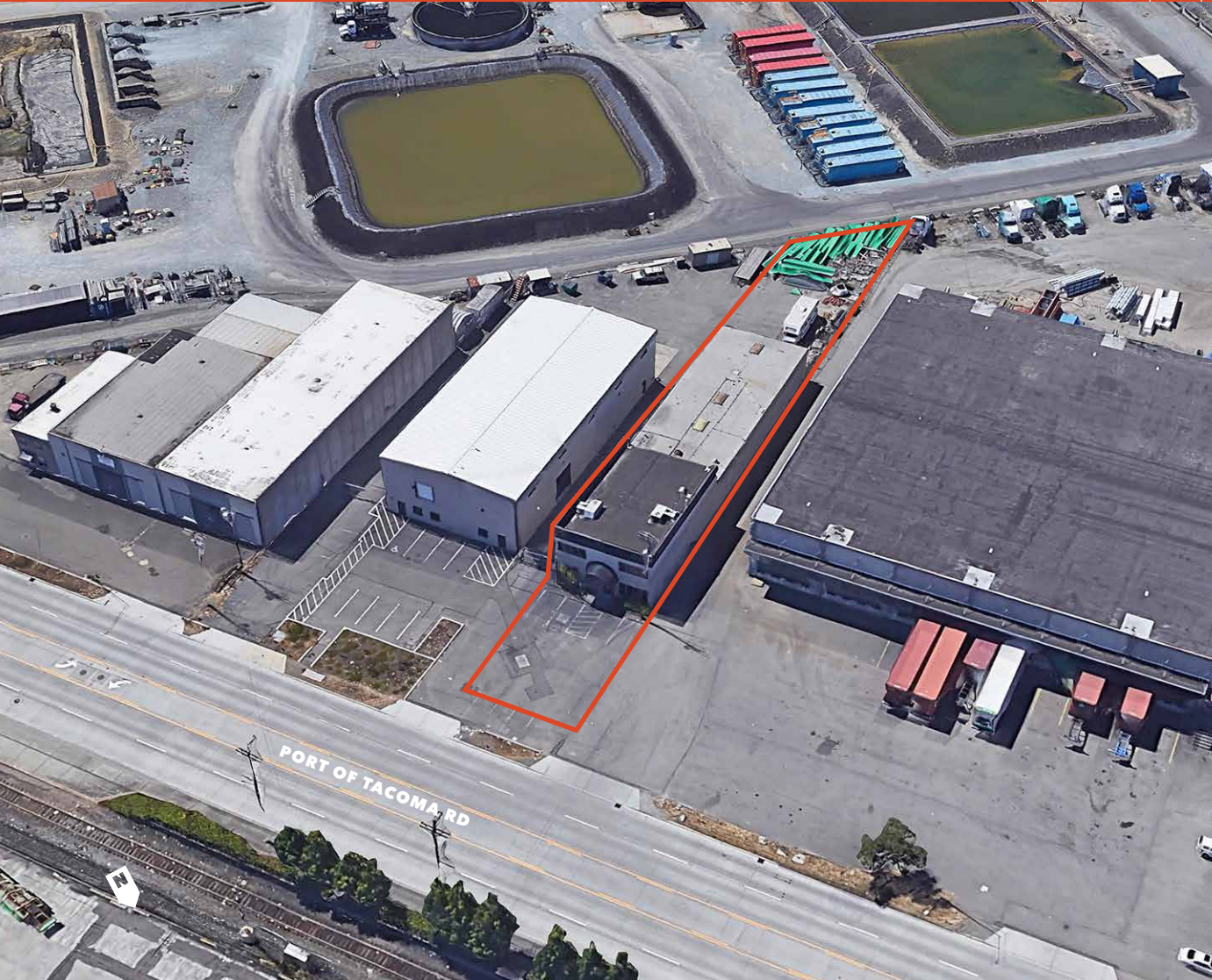
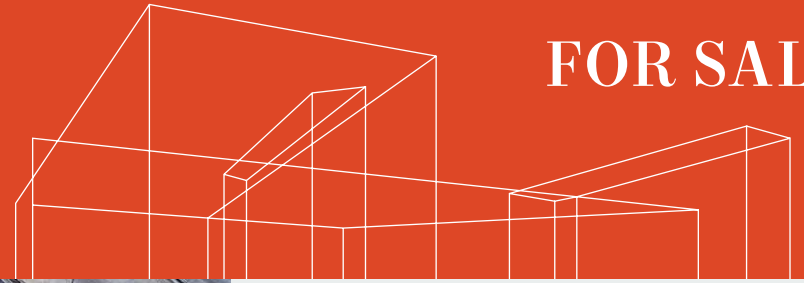




2406 Port of Tacoma Rd

TACOMA, WA

FOR SALE



\$850,000

0.4 ACRE site

8,400 SF building total

4,800 SF office (2,400 SF first floor, 2,400 SF second floor)

3,600 SF warehouse

16' clear height

TWO 14' grade level doors

EIGHT parking stalls available

GREAT opportunity for an owner/user or investor

HIGHLY sought after Port of Tacoma Road location

HUNTER CLARKE

253.722.1454

hunter.clarke@kidder.com

RAY SCHULER, SIOR, CCIM

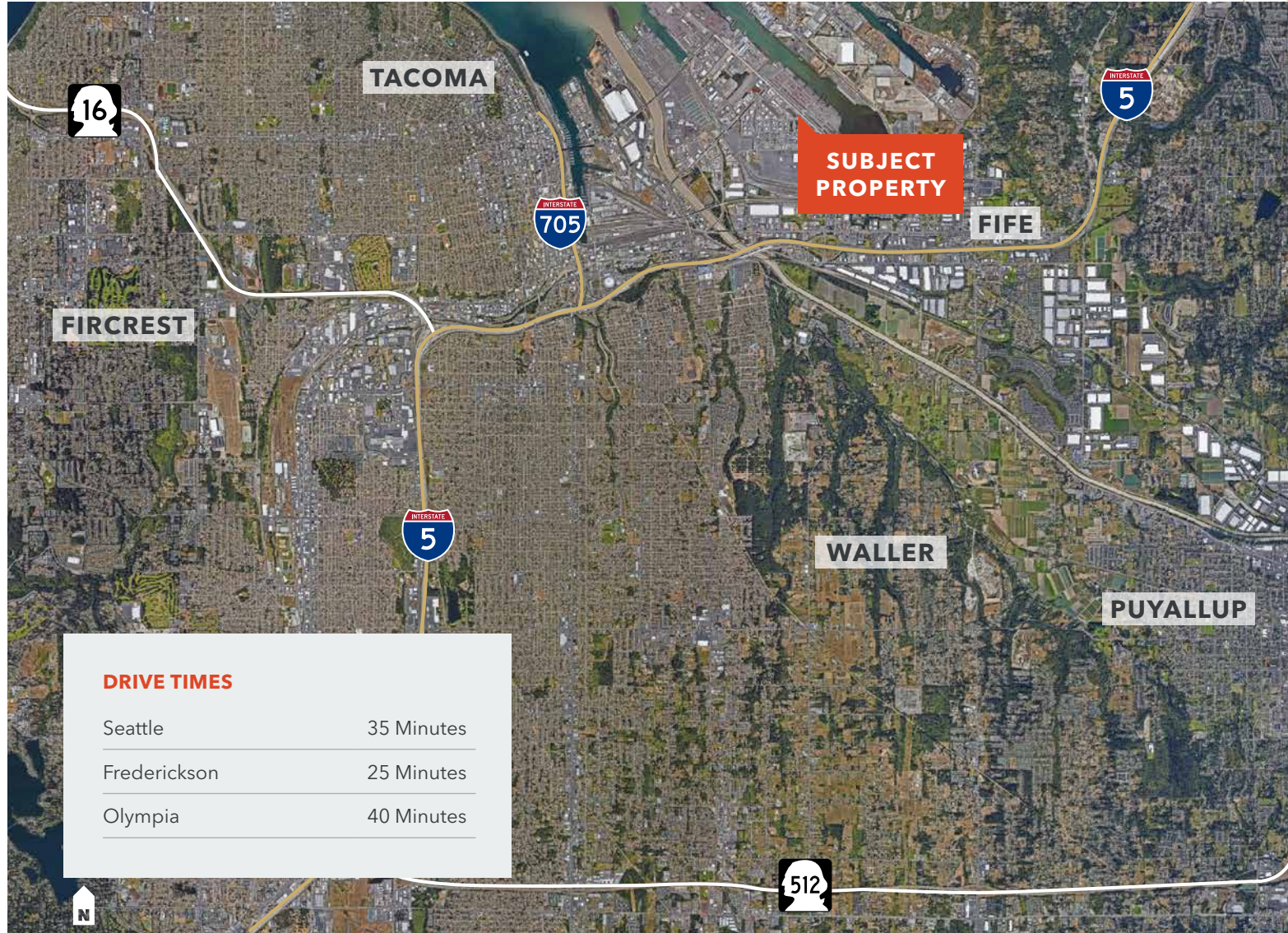
253.722.1454

hunter.clarke@kidder.com

FOR SALE

2406 Port of Tacoma Rd

TACOMA, WA



DRIVE TIMES

Seattle	35 Minutes
Frederickson	25 Minutes
Olympia	40 Minutes

[KIDDER.COM](https://www.kidder.com)

This information supplied herein is from sources we deem reliable. It is provided without any representation, warranty, or guarantee, expressed or implied as to its accuracy. Prospective Buyer or Tenant should conduct an independent investigation and verification of all matters deemed to be material, including, but not limited to, statements of income and expenses. Consult your attorney, accountant, or other professional advisor.

km Kidder Mathews