

LIGHT INDUSTRIAL FOR SALE

DOWNTOWN LIGHT INDUSTRIAL BUILDING

217 West Stewart, Puyallup, WA 98371



OFFERING SUMMARY

SALE PRICE:	\$1,499,999
LOT SIZE:	13,200 SF
YEAR BUILT:	1988
BUILDING SIZE:	11,520 SF
RENOVATED:	1992
ZONING:	CBD - Central Business District
PRICE / SF:	\$130.21

PROPERTY OVERVIEW

Great utility on this building in wonderful downtown location right next to the Sounder Train Station. 6,762 SF shop space w/ additional 12' x 70' loading dock, 918 SF office and 3,840 SF mezzanine for storage or additional office space. 3 bathrooms. 3 phase heavy power on site. Loading dock with 12 foot door and 10 foot ground height door as well. Parking on site, with additional on street parking as well. Zoning is CBD which allows for general commercial use.

PROPERTY HIGHLIGHTS

- Office Separate from Warehouse
- Mezzanine with 3,840 SF for storage or office
- Additional 12' x 70' Loading Dock
- 3 phase heavy power on site
- Parking on site
- Loading dock and grade level door
- 3 bathrooms

KW COMMERCIAL
1011 East Main,
Suite 208
Puyallup, WA 98372

JONATHAN HARPER
Director Of Sales And Leasing
O: 253.840.5574
C: 253.651.7500
jonathanharper@kw.com
WA #90048

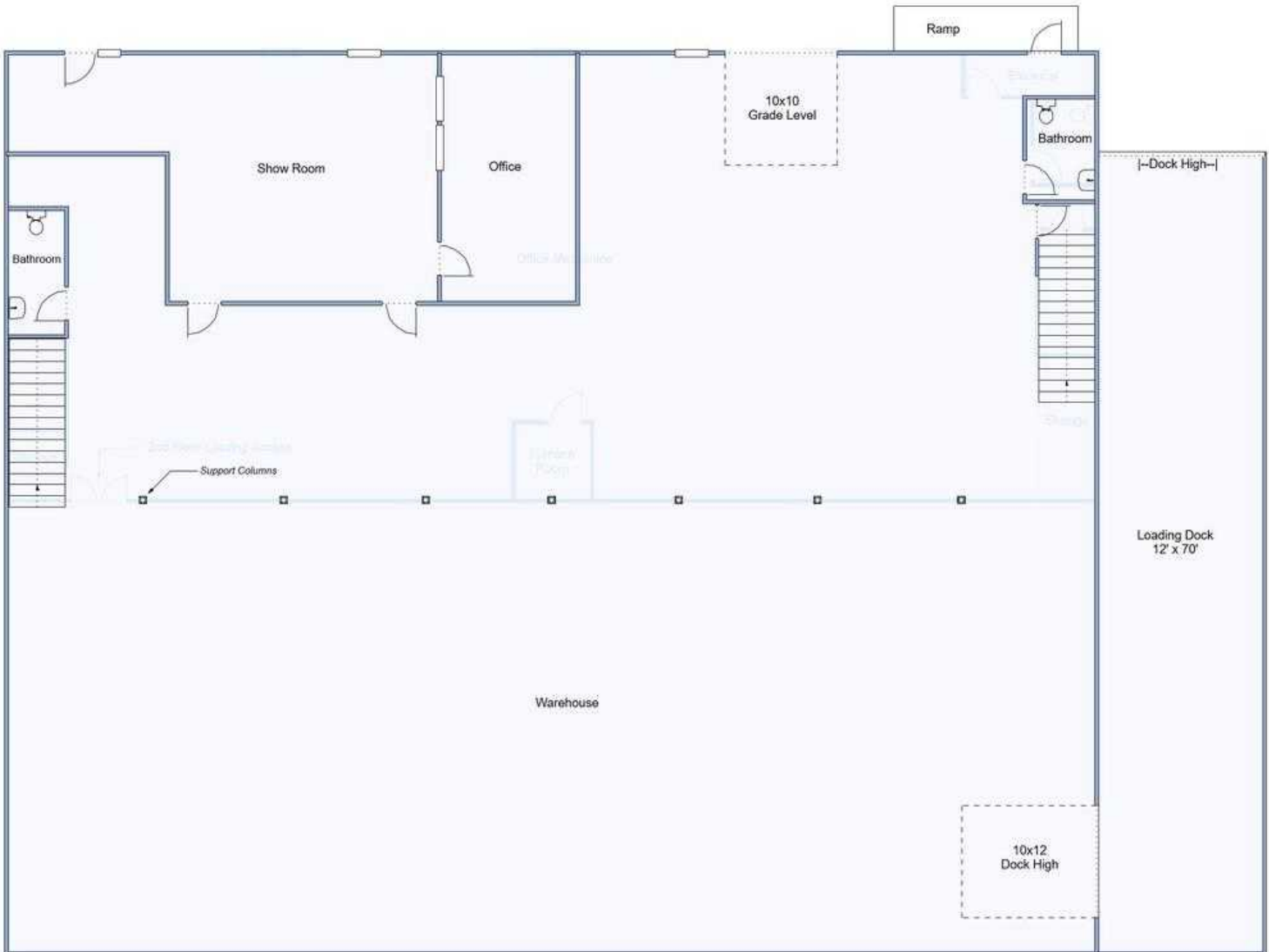
We obtained the information above from sources we believe to be reliable. However, we have not verified its accuracy and make no guarantee, warranty or representation about it. It is submitted subject to the possibility of errors, omissions, change of price, rental or other conditions, prior sale, lease or financing, or withdrawal without notice. We include projections, opinions, assumptions or estimates for example only, and they may not represent current or future performance of the property. You and your tax and legal advisors should conduct your own investigation of the property and transaction.

Each Office Independently Owned and Operated kwcoffenbecher.com/

LIGHT INDUSTRIAL FOR SALE

DOWNTOWN LIGHT INDUSTRIAL BUILDING

217 West Stewart, Puyallup, WA 98371



1

MAIN FLOOR

Office: 918 SF - Warehouse: 6,762 SF

KW COMMERCIAL
1011 East Main,
Suite 208
Puyallup, WA 98372

JONATHAN HARPER
Director Of Sales And Leasing
O: 253.840.5574
C: 253.651.7500
jonathanharper@kw.com
WA #90048

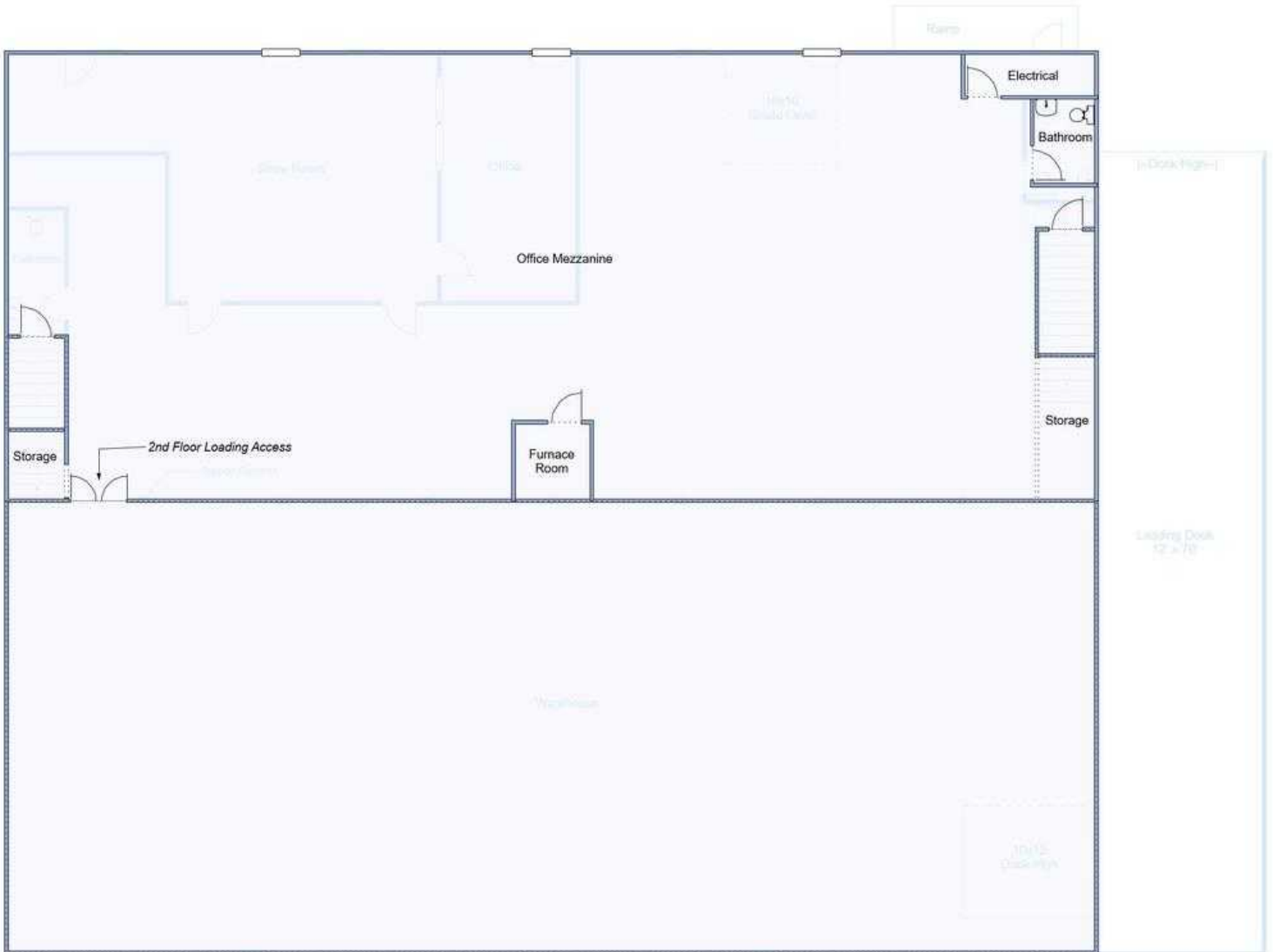
We obtained the information above from sources we believe to be reliable. However, we have not verified its accuracy and make no guarantee, warranty or representation about it. It is submitted subject to the possibility of errors, omissions, change of price, rental or other conditions, prior sale, lease or financing, or withdrawal without notice. We include projections, opinions, assumptions or estimates for example only, and they may not represent current or future performance of the property. You and your tax and legal advisors should conduct your own investigation of the property and transaction.

Each Office Independently Owned and Operated kwcoffenbecher.com/

LIGHT INDUSTRIAL FOR SALE

DOWNTOWN LIGHT INDUSTRIAL BUILDING

217 West Stewart, Puyallup, WA 98371



2 MEZZANINE
3,840 SF

KW COMMERCIAL
1011 East Main,
Suite 208
Puyallup, WA 98372

JONATHAN HARPER
Director Of Sales And Leasing
O: 253.840.5574
C: 253.651.7500
jonathanharper@kw.com
WA #90048

We obtained the information above from sources we believe to be reliable. However, we have not verified its accuracy and make no guarantee, warranty or representation about it. It is submitted subject to the possibility of errors, omissions, change of price, rental or other conditions, prior sale, lease or financing, or withdrawal without notice. We include projections, opinions, assumptions or estimates for example only, and they may not represent current or future performance of the property. You and your tax and legal advisors should conduct your own investigation of the property and transaction.

Each Office Independently Owned and Operated kwcoffenbecher.com/

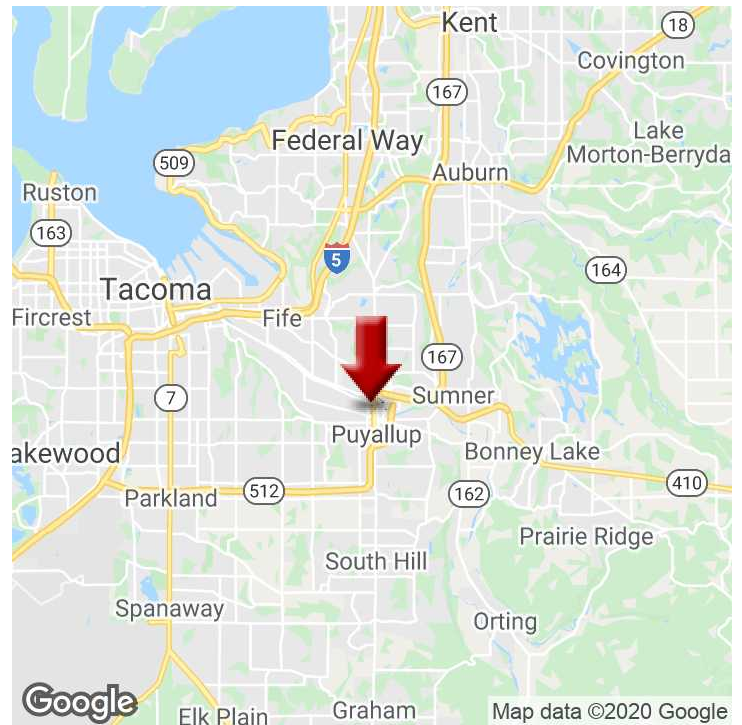
DOWNTOWN LIGHT INDUSTRIAL BUILDING

217 West Stewart, Puyallup, WA 98371



LOCATION DESCRIPTION

Located in the central business district of downtown Puyallup. Short walk from the Puyallup Sounder train station and close to local services.



KW COMMERCIAL
1011 East Main,
Suite 208
Puyallup, WA 98372

JONATHAN HARPER
Director Of Sales And Leasing
O: 253.840.5574
C: 253.651.7500
jonathanharper@kw.com
WA #90048

We obtained the information above from sources we believe to be reliable. However, we have not verified its accuracy and make no guarantee, warranty or representation about it. It is submitted subject to the possibility of errors, omissions, change of price, rental or other conditions, prior sale, lease or financing, or withdrawal without notice. We include projections, opinions, assumptions or estimates for example only, and they may not represent current or future performance of the property. You and your tax and legal advisors should conduct your own investigation of the property and transaction.

Each Office Independently Owned and Operated kwcoffenbecher.com/