

FOR SALE

8655 South 208th Street

Kent, WA



**SALE PRICE: \$5,880,000**

36,778 SF total  
-3,372 SF footprint  
-3,406 mezzanine (office)

Office 6,812 SF total  
-3,406 SF upstairs  
-3,406 SF downstairs

1.50 acres (approximately 65,256 SF)

16' clear height

2 DH / 1 GL loading door

Concrete tilt-up construction

Built in 1972 / M-2 (City of Kent) zoning

44 total parking spaces

1,200 amps / 277/480 volt power

Great manufacturing building, 3 minutes to 212th & SR-167

**CONTACT**

**Mike Newton**  
206.248.7311  
mnewton@kiddermathews.com

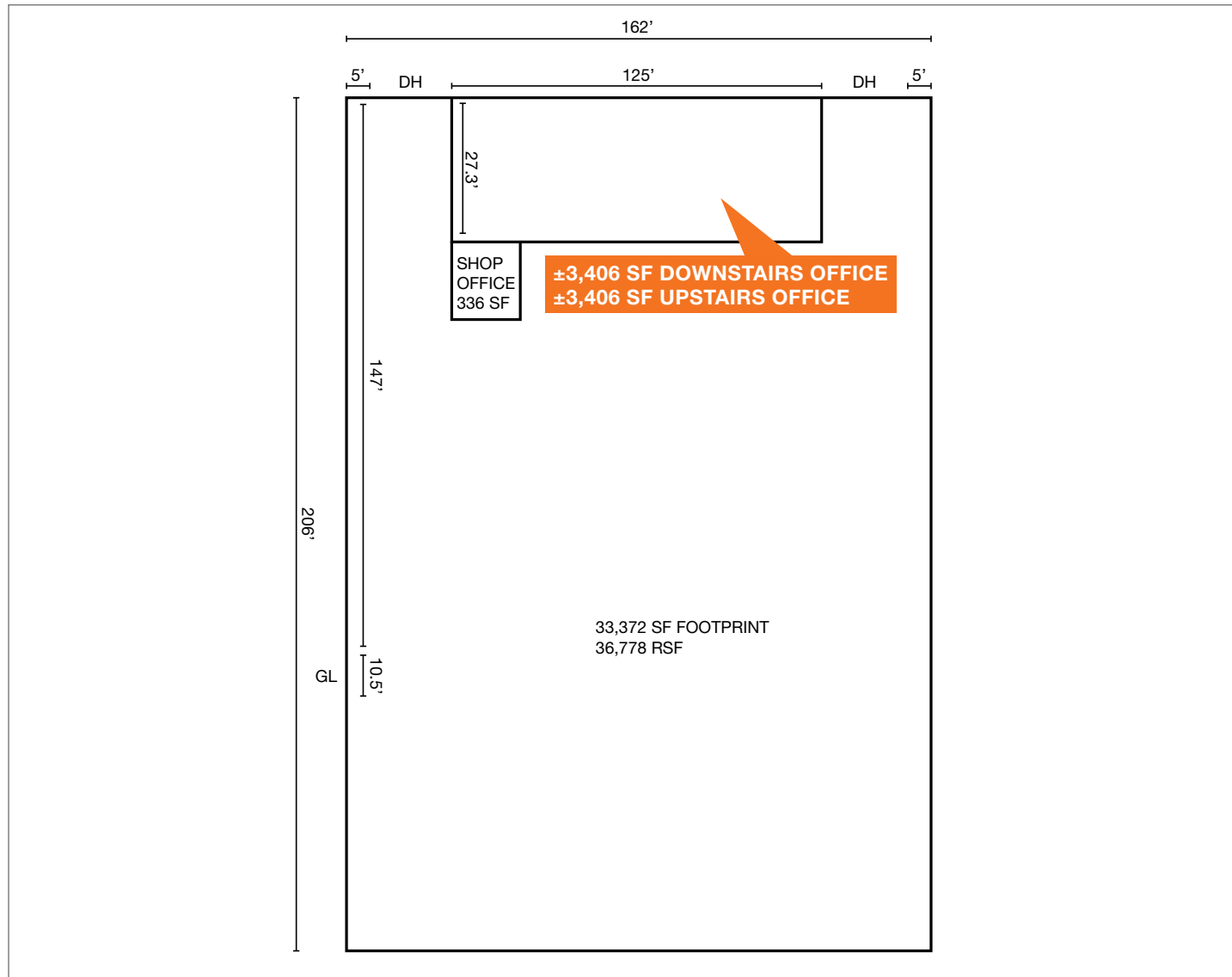
**Mike Catt**  
206.248.7309  
mcatt@kiddermathews.com



# FOR SALE

# 8655 South 208th Street

## FLOOR PLAN



## CONTACT

**Mike Newton**  
206.248.7311  
mnewton@kiddermathews.com

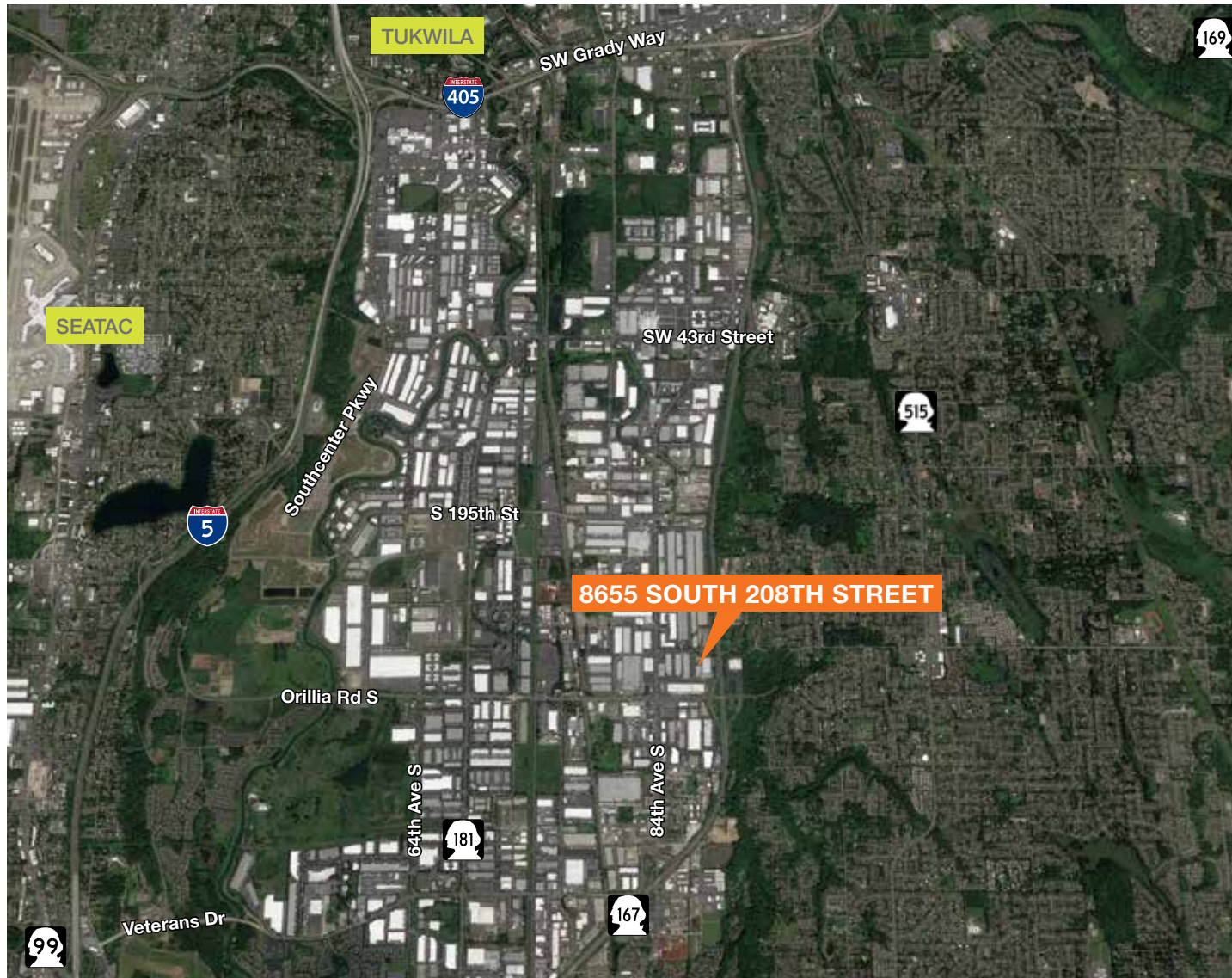
**Mike Catt**  
206.248.7309  
mcatt@kiddermathews.com



# FOR SALE

# 8655 South 208th Street

## REGIONAL AERIAL



## CONTACT

**Mike Newton**  
206.248.7311  
mnewton@kiddermathews.com

**Mike Catt**  
206.248.7309  
mcatt@kiddermathews.com

