

FOR SALE

GENERAL MECHANICAL BUILDING

2701 SOUTH J STREET | TACOMA, WA 98409

8,820 SF
AVAILABLE

8,820 SF SHELL METAL BUILDING AND ADJACENT LOT PERFECT FOR OWNER/USER



LEASE INFO

Size:	8,820 SF Shell Building ± 3,000 SF Office 0.98 Acres Land
Sale Price:	\$1,200,000
# of Floors:	1 plus partial mezzanine
Year Built:	1968
Loading:	1 Grade-level door

PROPERTY FEATURES



Made up of 2 Adjacent Parcels



Centrally Located



Ample Parking



Easy Freeway Access



AMANDA BRUCE
253.779.2434
abruce@neilwalter.com

AARON ROSEN
253.779.2418
arosen@neilwalter.com

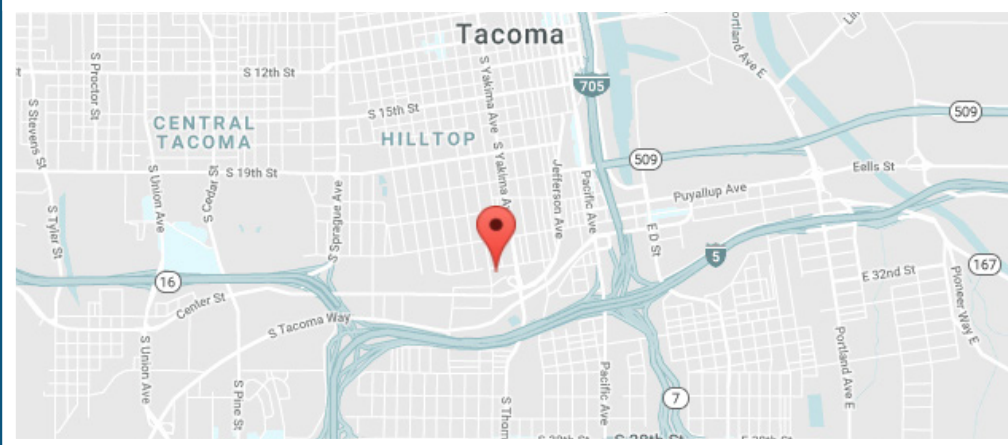
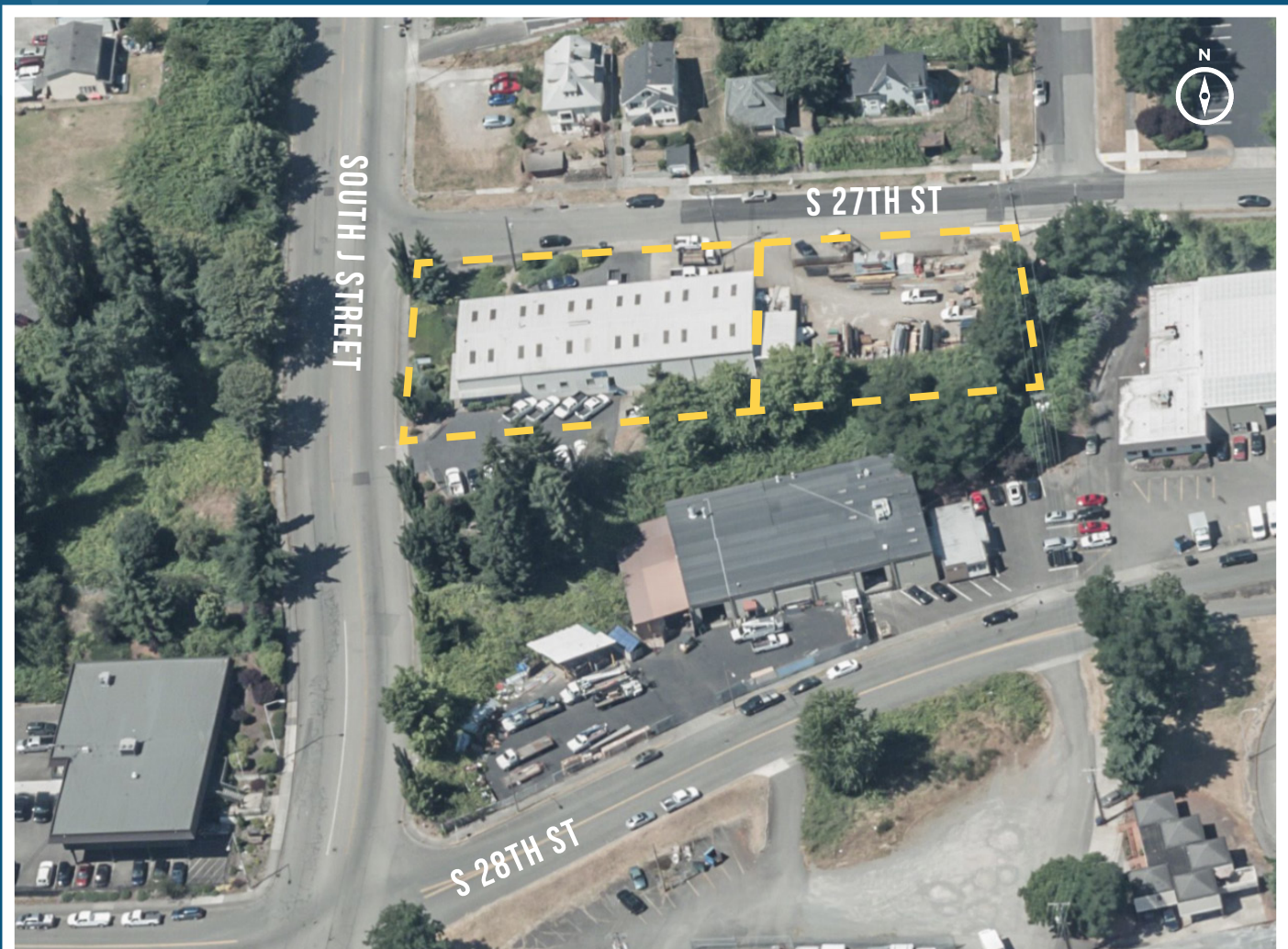
All square footage references are approximate. The information contained herein is from sources deemed reliable. Prospective Buyer or Tenant should conduct an independent investigation and verification of all matters.

GENERAL MECHANICAL BUILDING



2701 SOUTH J STREET | TACOMA, WA 98409

NEIL WALTER
COMPANY



All square footage references are approximate. The information contained herein is from sources deemed reliable. It is provided without representation, warranty or guarantee, expressed or implied as to its accuracy. Prospective Buyer or Tenant should conduct an independent investigation of all matters.

AMANDA BRUCE
253.779.2434
abruce@neilwalter.com

AARON ROSEN
253.779.2418
arosen@neilwalter.com

1940 East D St #100
Tacoma, WA 98421
253.779.8400
www.neilwalter.com