

FOR SALE

# SUMMIT PLAZA

8705

CANYON ROAD EAST

Puyallup, WA 98371

\$3,950,000



## PROPERTY FEATURES

- + ±8.9 acres (±7 useable)
- + Main Building:
  - Office: ±6,000 SF
  - Shop: ±3,400 SF
- + Graveled, lighted and fenced yard area
- + Excellent soil drainage with existing on-site retention ponds
- + All major utilities to site
- + Heavy power
- + Two 12' x 14' grade-level doors to shop area
- + High quality office finishes
- + Ample employee parking
- + Easy access to freeways
- + 1.3 miles to SR-512
- + 6.7 Miles to I-5
- + 8.8 miles to Port of Tacoma



## CONTACT US

### BOB HACKER

Vice President  
+1 253 596 0049  
bob.hacker@cbre.com

### CBRE, INC.

1201 Pacific Ave  
Suite 1502  
Tacoma, WA 98402

[www.cbre.us/tacoma](http://www.cbre.us/tacoma)

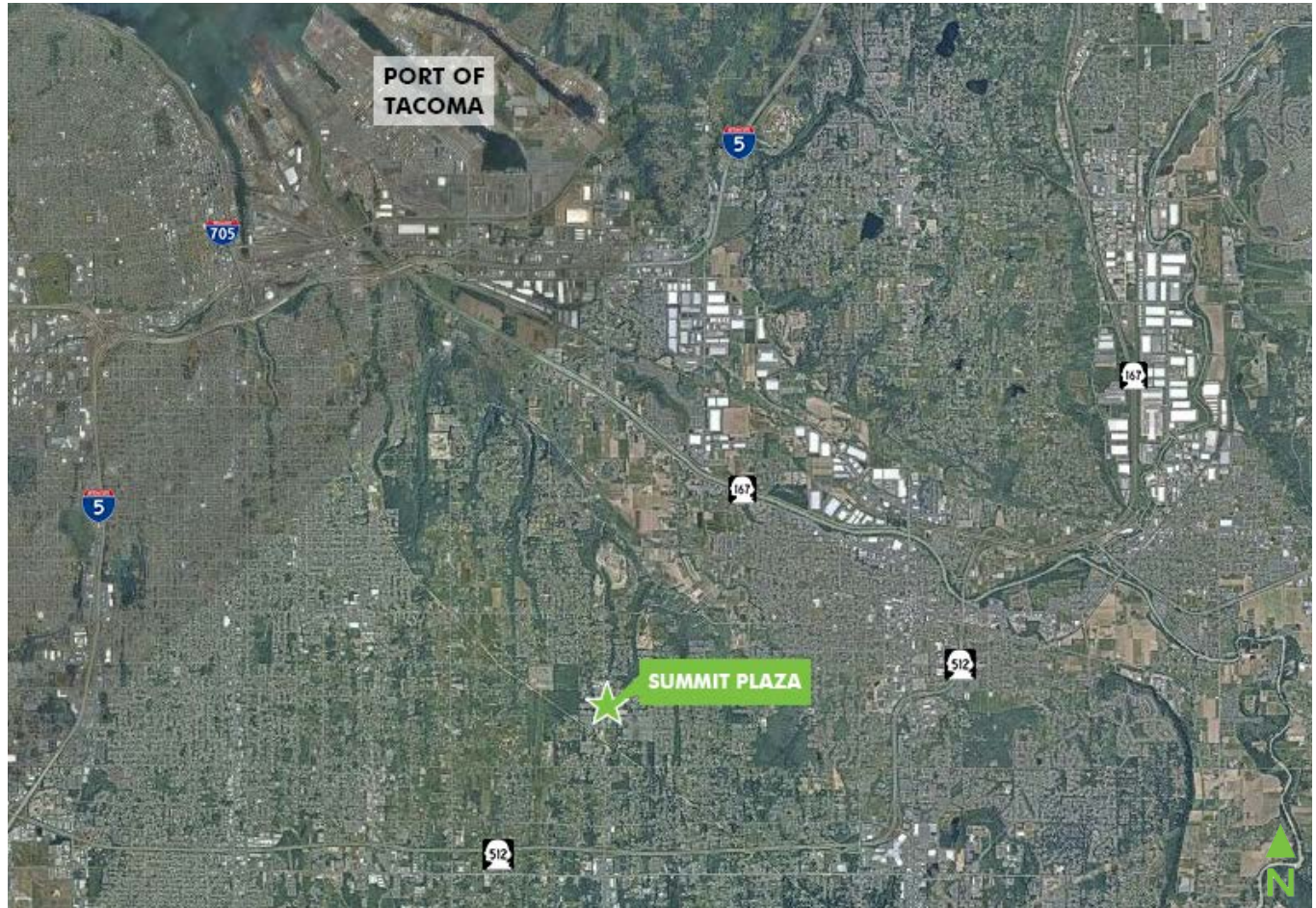
**CBRE**

# FOR SALE SUMMIT PLAZA

8705  
CANYON RD EAST  
Puyallup, WA 98371



## LOCATION MAP



Destination	Distance	Destination	Distance
Port of Tacoma	8.8 miles	SR- 512	1.3 miles
I-5	6.7 miles	Hwy-167	3.8 miles

© 2017 CBRE, Inc. All rights reserved. This information has been obtained from sources believed reliable, but has not been verified for accuracy or completeness. You should conduct a careful, independent investigation of the property and verify all information. Any reliance on this information is solely at your own risk. CBRE and the CBRE logo are service marks of CBRE, Inc. All other marks displayed on this document are the property of their respective owners. Photos herein are the property of their respective owners. Use of these images without the express written consent of the owner is prohibited. rb 10/30/17