

# 2920 S Cushman Ave

Tacoma, WA



**FOR SALE**

21,200 SF Warehouse

**Ty Clarke**  
253.722.1419  
tyclarke@kiddermathews.com

**Todd Clarke**  
253.722.1422  
tclarke@kiddermathews.com

[kiddermathews.com](http://kiddermathews.com)

**km** Kidder  
Mathews

# 2920 S Cushman Ave

Tacoma, WA

## Features

<b>BUILDING</b>	21,200 SF ±5,100 SF office located on 2 floors 1.18 acre site Clear span Sprinklered Asphalt flooring
<b>YEAR BUILT</b>	2000
<b>SALE PRICE</b>	\$1,802,000 (\$85.00 psf)
<b>POWER</b>	400 AMPS, 3 phase
<b>ZONING</b>	M2 Heavy Industrial I-502 Compliant: Productions/Processing
<b>LOCATION</b>	Located in the heart of Tacoma industrial area
<b>DRIVE TIME</b>	1.8 miles to I-5/SR 16 3.5 miles to Port of Tacoma



**Ty Clarke**  
253.722.1419  
tyclarke@kiddermathews.com

**Todd Clarke**  
253.722.1422  
tclarke@kiddermathews.com

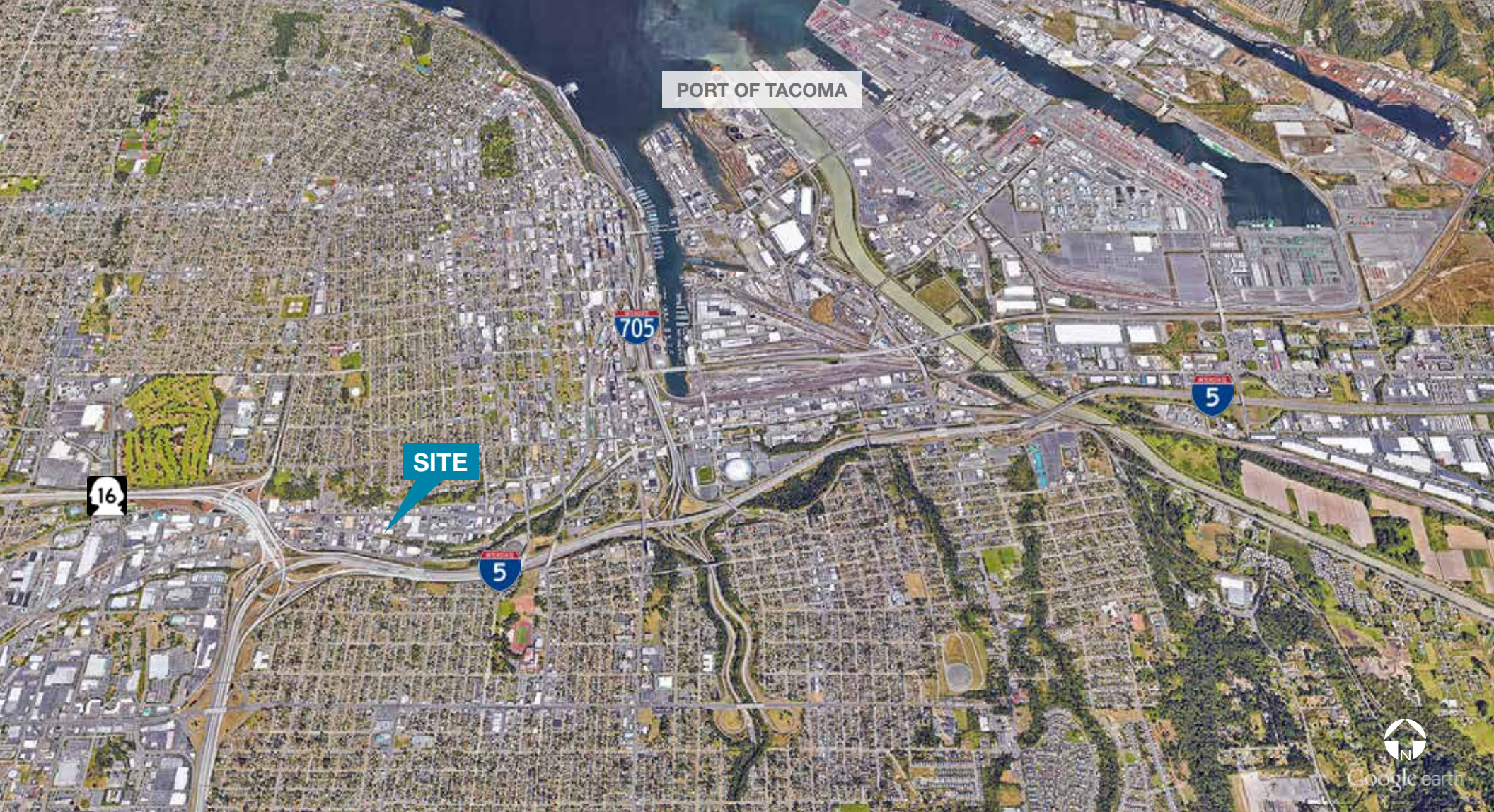
[kiddermathews.com](http://kiddermathews.com)



This information supplied herein is from sources we deem reliable. It is provided without any representation, warranty or guarantee, expressed or implied as to its accuracy. Prospective Buyer or Tenant should conduct an independent investigation and verification of all matters deemed to be material, including, but not limited to, statements of income and expenses. Consult your attorney, accountant, or other professional advisor.

# 2920 S Cushman Ave

Tacoma, WA



**Ty Clarke**  
253.722.1419  
tyclarke@kiddermathews.com

**Todd Clarke**  
253.722.1422  
tclarke@kiddermathews.com

[kiddermathews.com](http://kiddermathews.com)



This information supplied herein is from sources we deem reliable. It is provided without any representation, warranty or guarantee, expressed or implied as to its accuracy. Prospective Buyer or Tenant should conduct an independent investigation and verification of all matters deemed to be material, including, but not limited to, statements of income and expenses. Consult your attorney, accountant, or other professional advisor.