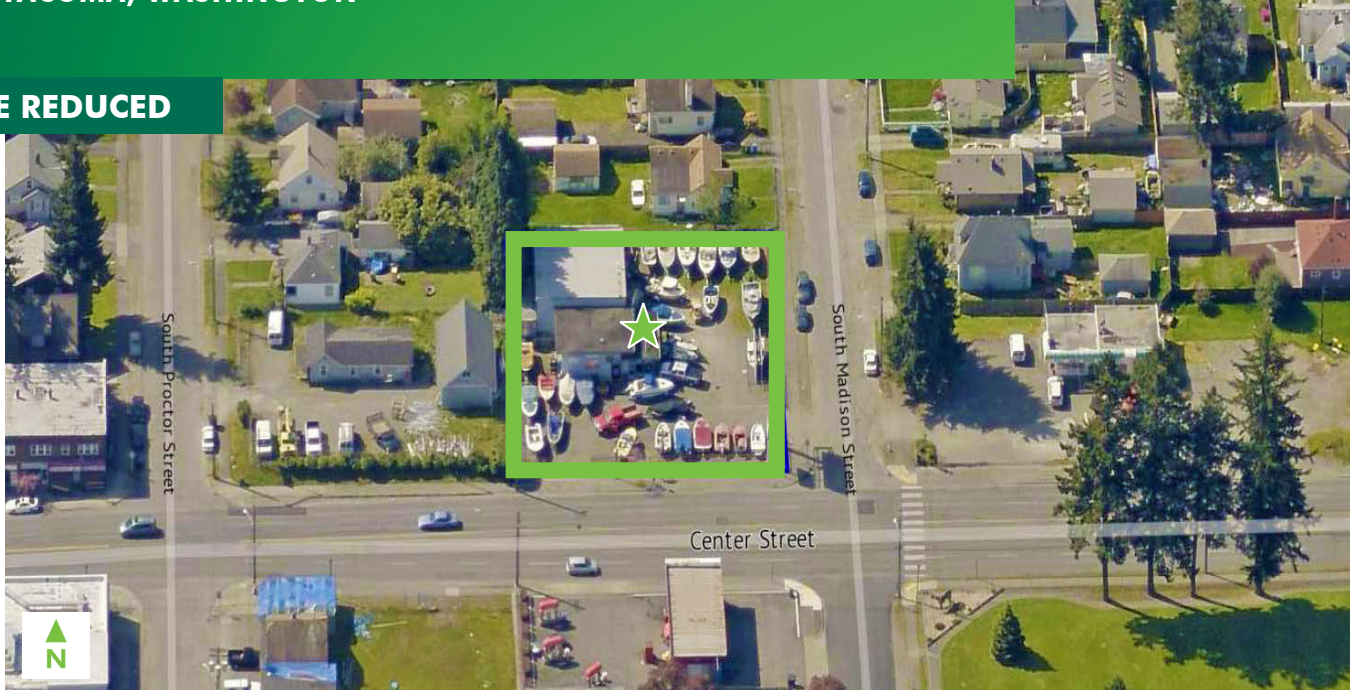


FOR SALE

CENTER STREET BUILDING

3914 CENTER STREET
TACOMA, WASHINGTON

PRICE REDUCED



PROPERTY INFORMATION

FORMER MARINE REPAIR FACILITY, FULLY REMODELED IN 2013

- + Zoned C2
- + ±18,000 SF, fully-fenced and lit
- + 3-phase power

BUILDING INFORMATION

- + Price: \$499,000
- + Size ±2,900 SF
 - ±1,100 SF office
 - ±1,800 SF shop
- + Two drive-in doors (12' x 14')
- + 15' clear height
- + Complete remodel, down to the studs, in 2013
 - New security system
 - New roof
 - New electrical



CONTACT US

LEON TITUS

+1 253 596 0042
leon.titus@cbre.com

HARRISON LAIRD

+1 253 596 0030
harrison.laird@cbre.com

CBRE

1201 Pacific Avenue
Suite, 1502
Tacoma, WA 98402

www.cbre.us/tacoma

CBRE

FOR SALE CENTER STREET BUILDING

3914 CENTER ST
Tacoma, WA



| ESTIMATED DEMOGRAPHICS | | | |
|---------------------------------|----------|----------|----------|
| | 1 mile | 3 mile | 5 mile |
| Population | 8,016 | 139,387 | 270,814 |
| # of Households | 3,542 | 58,644 | 108,893 |
| Average Household Income | \$49,565 | \$64,239 | \$66,661 |
| Daytime Population | 13,032 | 108,695 | 158,279 |



CONTACT US

LEON TITUS

+1 253 596 0042
leon.titus@cbre.com

HARRISON LAIRD

+1 253 596 0030
harrison.laird@cbre.com

CBRE

1201 Pacific Avenue
Suite, 1502
Tacoma, WA 98402

© 2016 CBRE, Inc. This information has been obtained from sources believed reliable. We have not verified it and make no guarantee, warranty or representation about it. Any projections, opinions, assumptions or estimates used are for example only and do not represent the current or future performance of the property. You and your advisors should conduct a careful, independent investigation of the property to determine to your satisfaction the suitability of the property for your needs. Photos herein are the property of their respective owners and use of these images without the express written consent of the owner is prohibited. CBRE and the CBRE logo are service marks of CBRE, Inc. and/or its affiliated or related companies in the United States and other countries. All other marks displayed on this document are the property of their respective owners. MMP 11/14/16

www.cbre.us/tacoma

CBRE