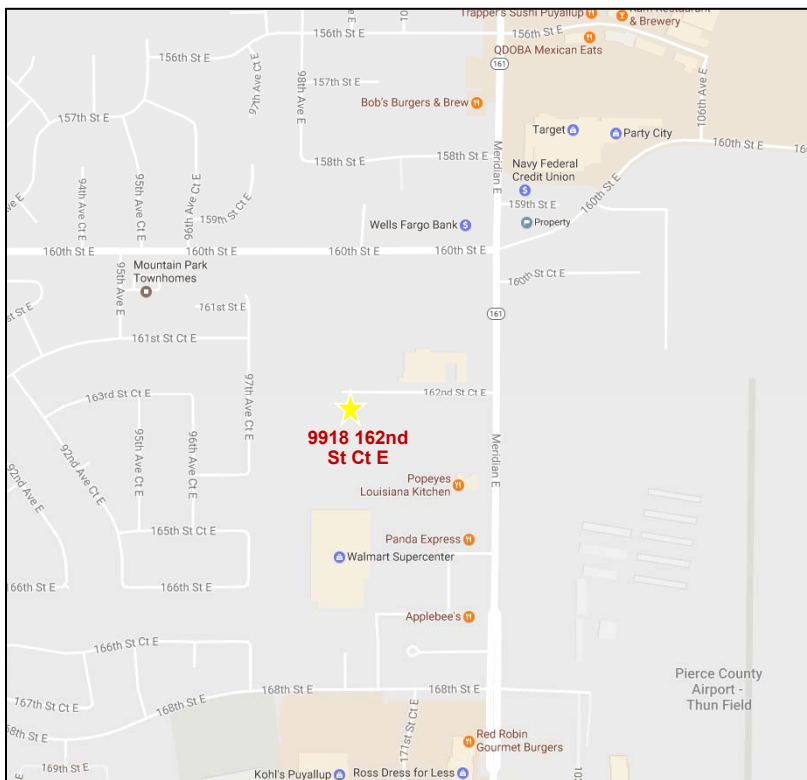


Puyallup Industrial Condos

9918 162nd St Ct E | Puyallup, WA

FOR SALE



2,896 - 3,302 SF AVAILABLE
SALE PRICE: \$145 PSF

	Unit 1	Unit 14
Total SF:	2,896 SF	3,302 SF
Loading:	1 Grade-level door	2 Drive-thru doors

PROPERTY HIGHLIGHTS

- Restroom in each suite
- Sprinklered
- 18'-22' clear height
- Built in 2000
- 3 phase power
- Just off Meridian Ave
- Unit 14 contains dock high loading area

Nick Ratzke
253.779.2414
nratzke@neilwalter.com

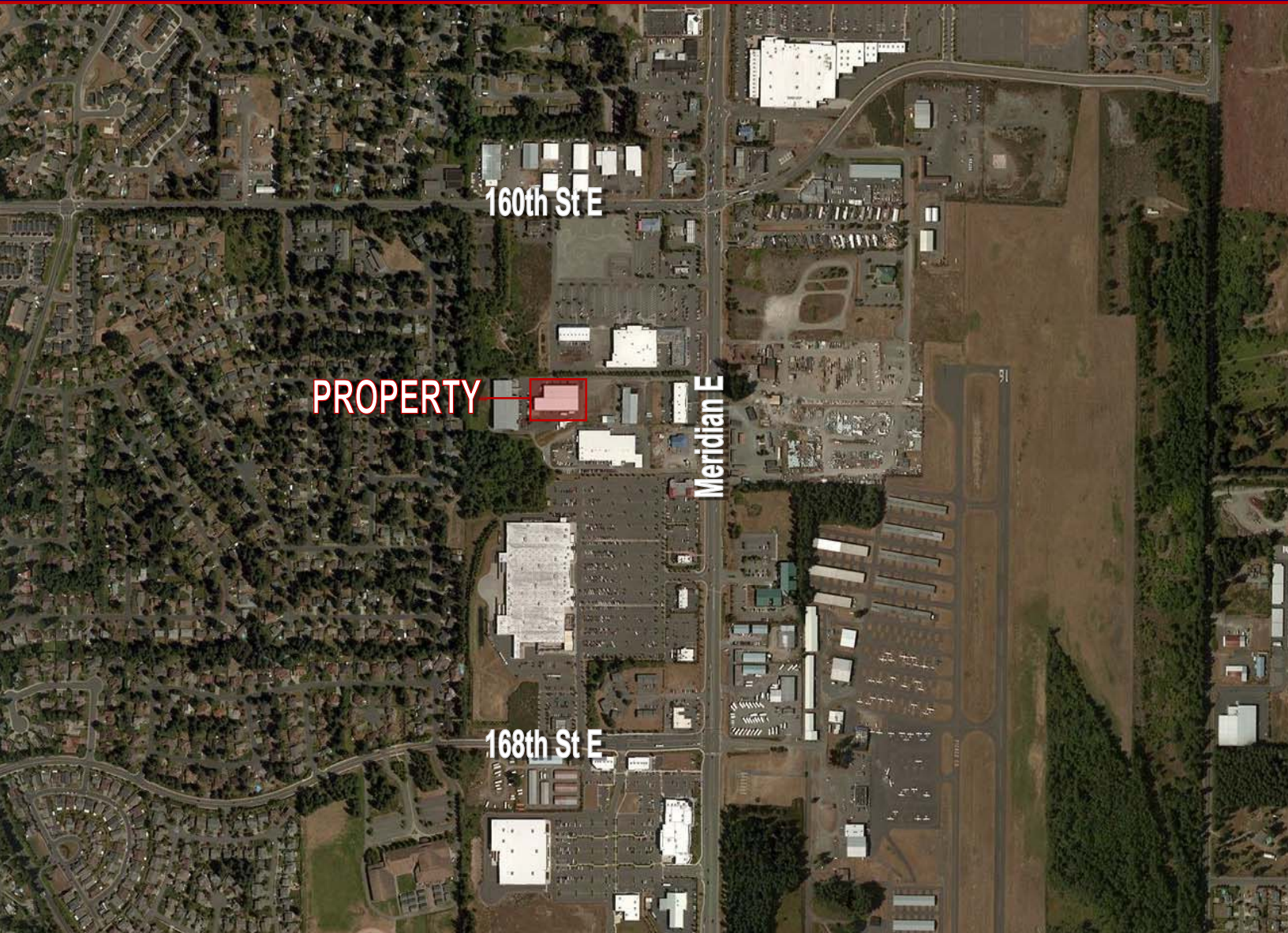
www.neilwalter.com



Puyallup Industrial Condos

9918 162nd St Ct E | Puyallup, WA

FOR SALE



CONTACT

Nick Ratzke
253.779.2414
nratzke@neilwalter.com



Neil Walter Company: 1940 East D Street, Suite 100 - Tacoma, WA 98421

www.neilwalter.com

All square footage references are approximate. The information contained herein is from sources deemed reliable. It is provided without representation, warranty or guarantee, expressed or implied as to its accuracy. Prospective Buyer or Tenant should conduct an independent investigation and verification of all matters.