

Pressco Products Building

22617 85th Place South
Kent, WA

7,400 SF total

2,000 SF office

31,400 SF land (0.72 AC)

Grade-level loading

14'-16' clear height

CM1 zoning

Excellent opportunity for
owner/user

Great access and exposure to
SR-167 on-ramp

Heavy power

\$1,295,000



Location



Contact

Peter Wooding

206.248.7301

pwooding@kiddermathews.com

Tony Miltenberger, SIOR

206.248.7307

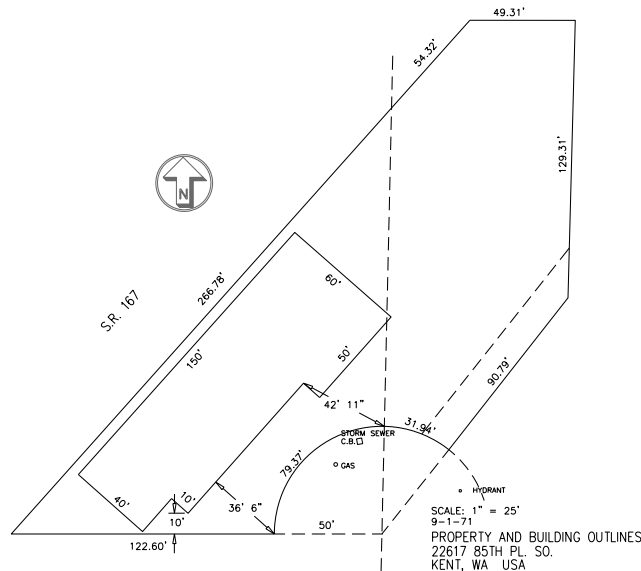
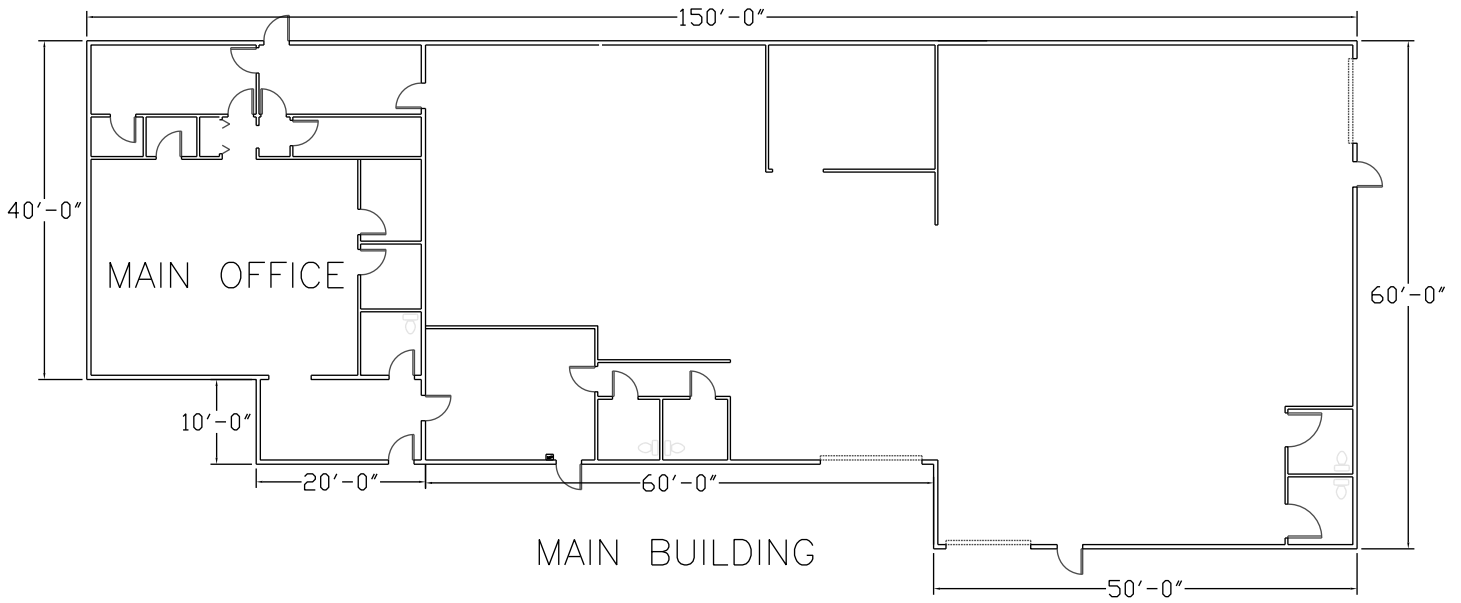
tonym@kiddermathews.com

Thad Mallory, SIOR

206.248.7338

tmallory@kiddermathews.com

Pressco Products Building



Contact

Peter Wooding
206.248.7301
pwooding@kiddermathews.com

Tony Miltenberger, SIOR
206.248.7307
tonym@kiddermathews.com

Thad Mallory, SIOR
206.248.7338
tmallory@kiddermathews.com