

Port of Tacoma Warehouse

501 East 11th Street | Tacoma, WA

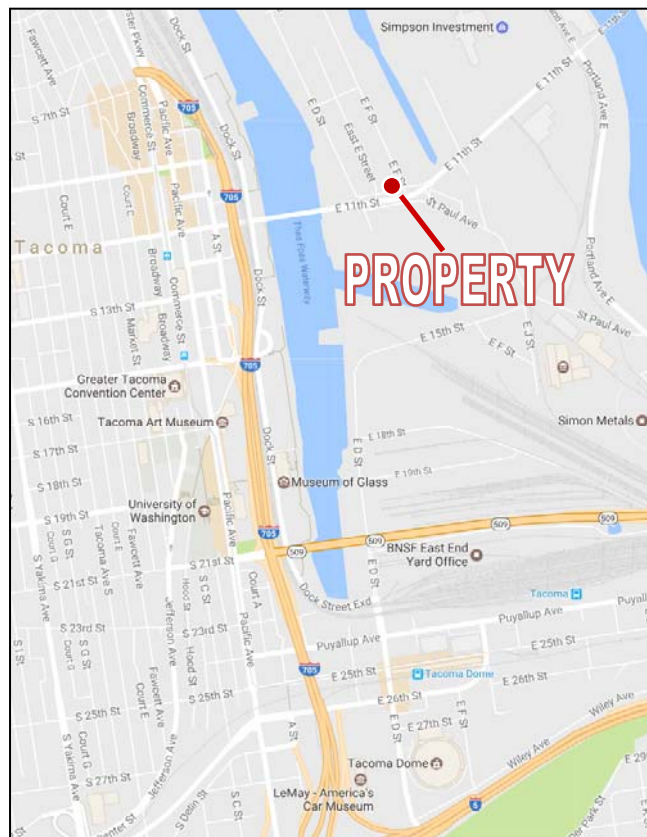


+/-27,700 SF TOTAL
+/- 20,000 SF Yard Area

Sale Price: \$1,850,000 | Lease Rate: \$11,500/Mo, NNN

PROPERTY HIGHLIGHTS

- 36 feet clear height
- 20,000-lb crane
- Zoned M-2 (Heavy Industrial)
- 20,000 SF fenced yard area
- Perfect location for fabrication, boat building or manufacturing business
- Located on 11th Street corridor in the Port of Tacoma
- Just off of Portland Avenue
- Easy access to/from SR 509 and Downtown Tacoma



Eric Cederstrand
253.779.2428
ecederstrand@neilwalter.com

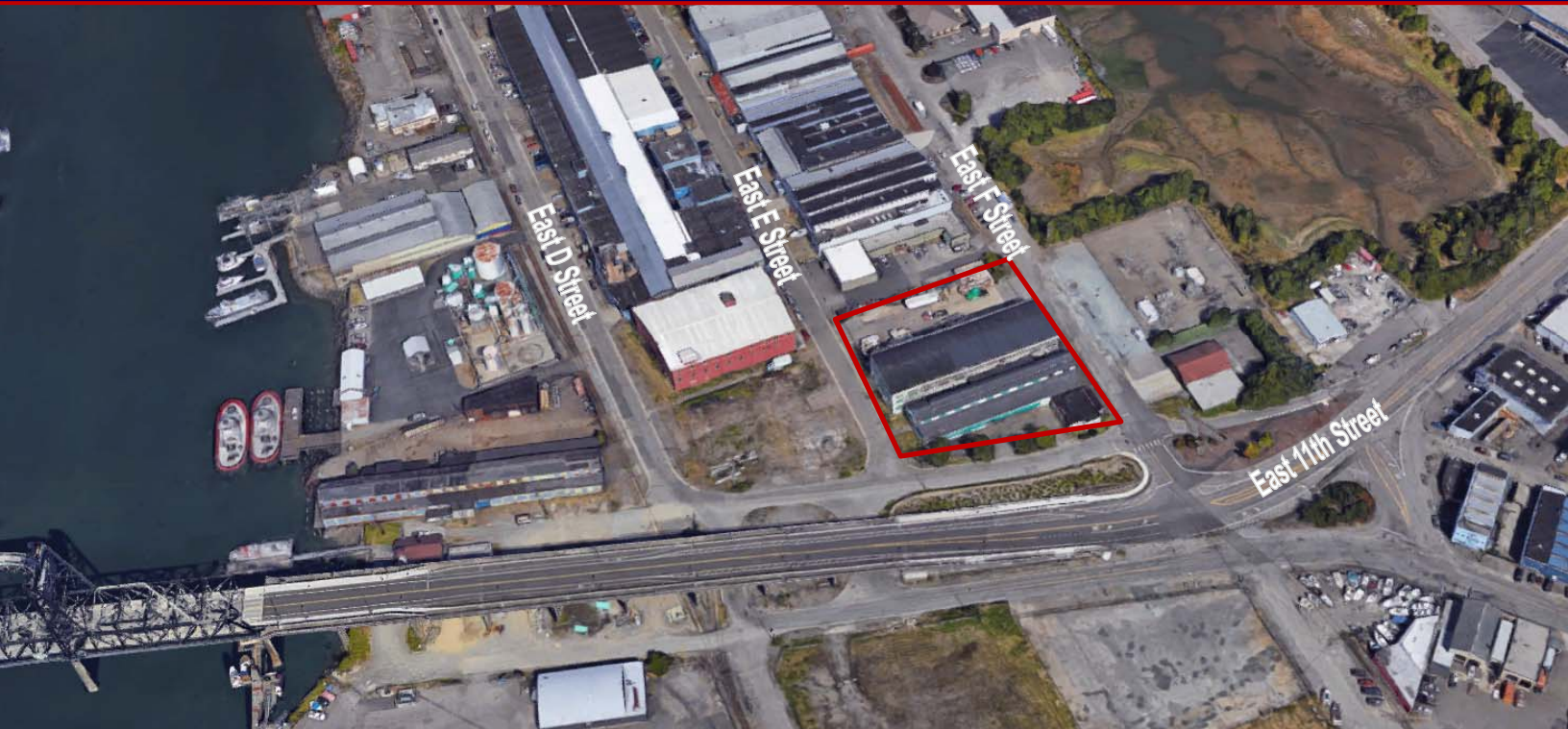
Tom Brown
253.779.2427
tbrown@neilwalter.com

www.neilwalter.com

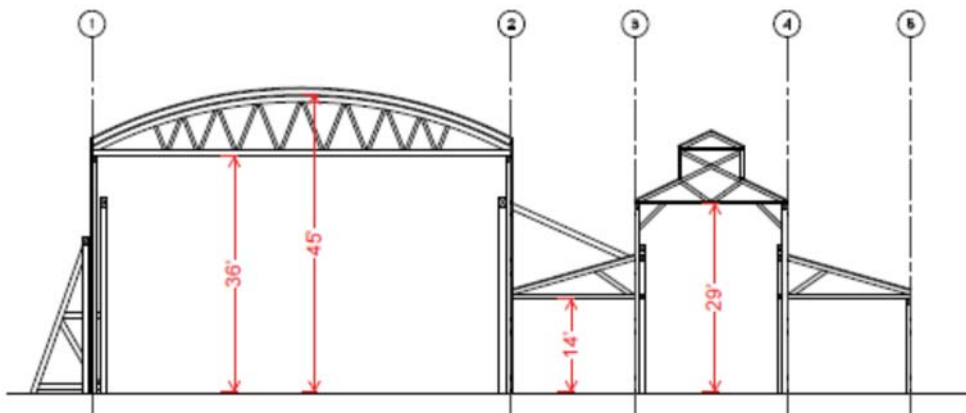
NWC NEILWALTER
COMPANY
COMMERCIAL REAL ESTATE SERVICES

Port of Tacoma Warehouse

501 East 11th Street | Tacoma, WA



Potential redevelopment rendering



CONTACT

Eric Cederstrand
253.779.2428
ecederstrand@neilwalter.com

Tom Brown
253.779.2427
tbrown@neilwalter.com