

TEETER Distribution Building

**FOR
SALE**



Rare Warehouse with Office

9902 162nd St Ct E | Puyallup, WA



Sale Price \$3,600,000

BUILDING SIZE

31,386 SF Total (9,990 SF Office)

21,396 SF Warehouse

5,400 SF Lower Level Office

4,590 SF Main Level Office

LAND SIZE

108,028 SF (2.48 Acres)

PROPERTY HIGHLIGHTS

- 4,500 SF of structured mezzanine (not included in total SF)
- Steel frame construction, built in 2002
- 1 GL door (16'x14'); 5 DH doors (10'x10')
- 24'-26' clear height
- 32 parking stalls
- Wet sprinkler system
- Zoned MUD

SOUTH SOUND INDUSTRIAL GROUP

Scott Price
253.779.2419
sprice@neilwalter.com

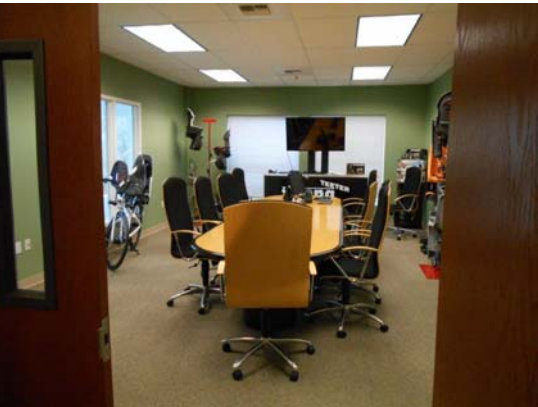
Joel Jones
253.779.2422
jjones@neilwalter.com

TEETER Distribution Building

9902 162nd St Ct E
Puyallup, WA

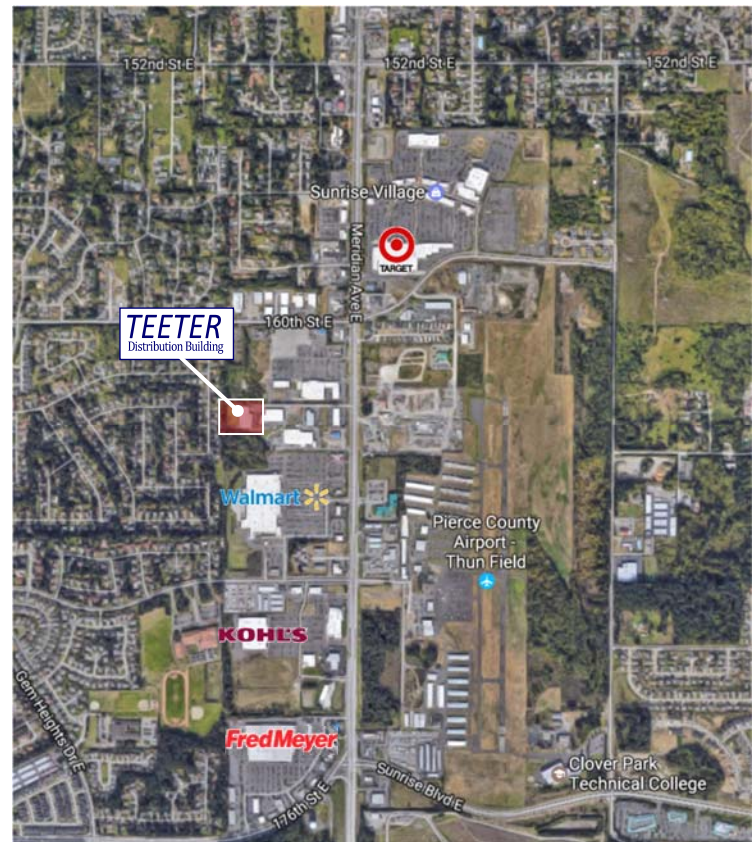
OFFICE AREA

Two floors of office space made up of private offices, conference room, lunchroom, and open workspace throughout.



WAREHOUSE / LOADING AREA

The 21,396 SF of warehouse space has metal halide lighting with 5 (10'x10') dock-high doors and 1 grade-level door with dock stage area.



LOCATION DESCRIPTION

The Teeter Building is located 3 miles from SR-512 to the north along Meridian East and 162nd St Ct East.